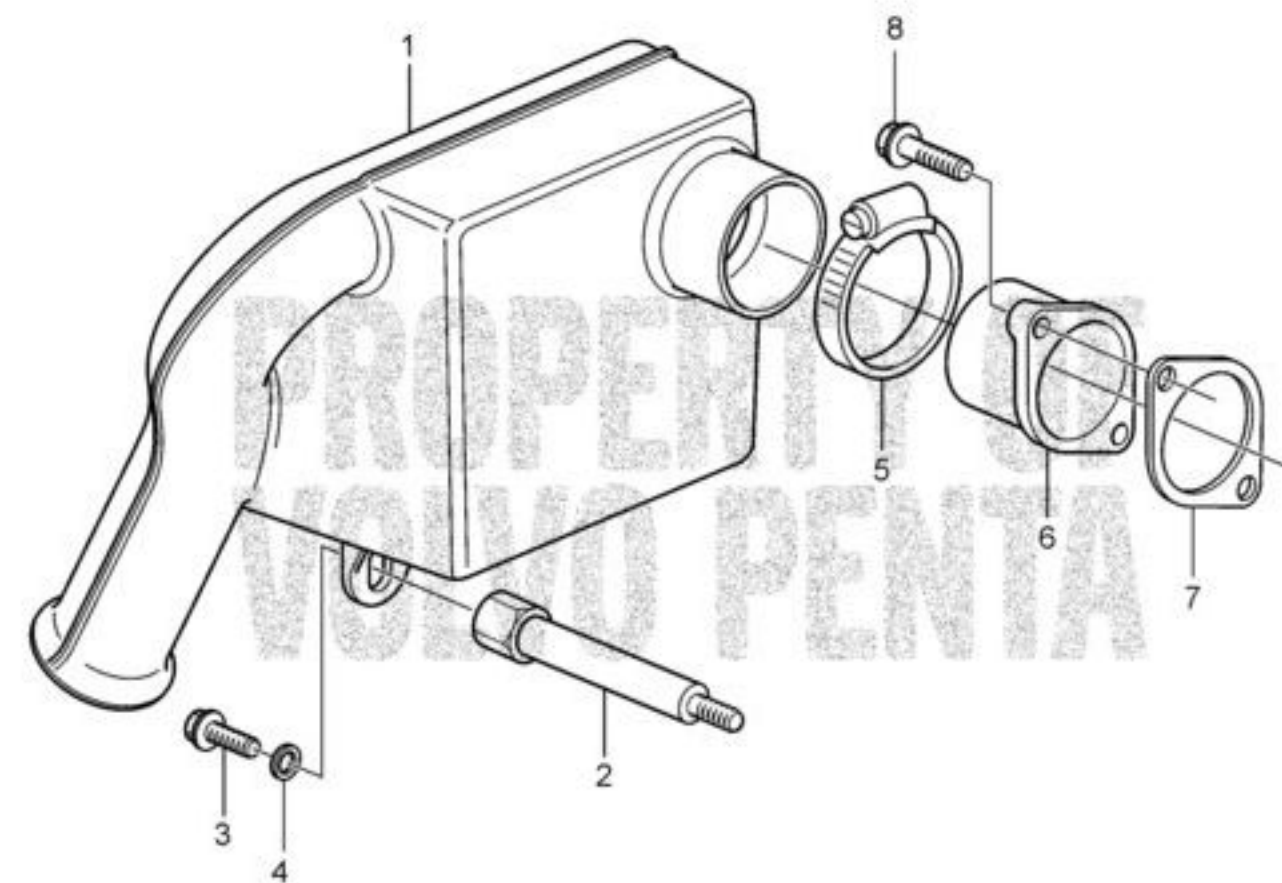


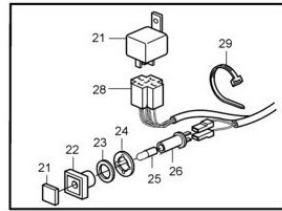
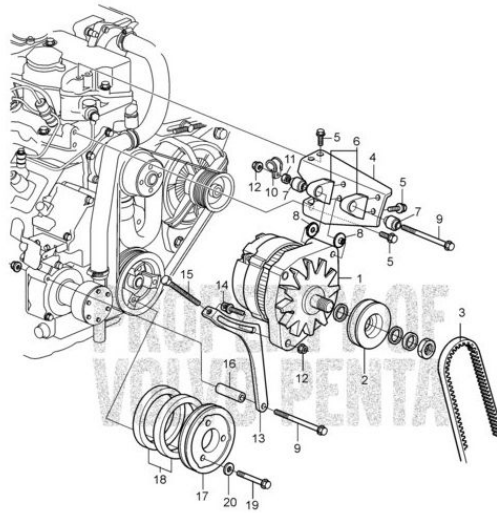
# Volvo Penta Exploded view / schematic Air filter

D1-20A, D1-20B, D1-30A, D1-30B, D2-40A, D2-40B, D1-20F, D1-30F, D2-40F



#	Description	PartNo.	Qty	Price/each (DKK)
1	Inlet silencer	3809924	1	820,00
Complete, non-interchangeable filter unit				
2	Spacer screw	3819969	1	497,50
3	Flange screw	946544	1	2,00
4	Washer	21246676	1	6,25
5	Clip	21246695	1	41,00
6	Adapter	3809658	1	186,25
D1-20, D1-30				
6	Adapter	3884971	1	126,25
D2-40				
7	Gasket	3809667	1	73,50
8	Screw	3580013	2	18,63

Volvo Penta Exploded view / schematic Extra Alternator  
D1-20A, D1-20B, D1-20F

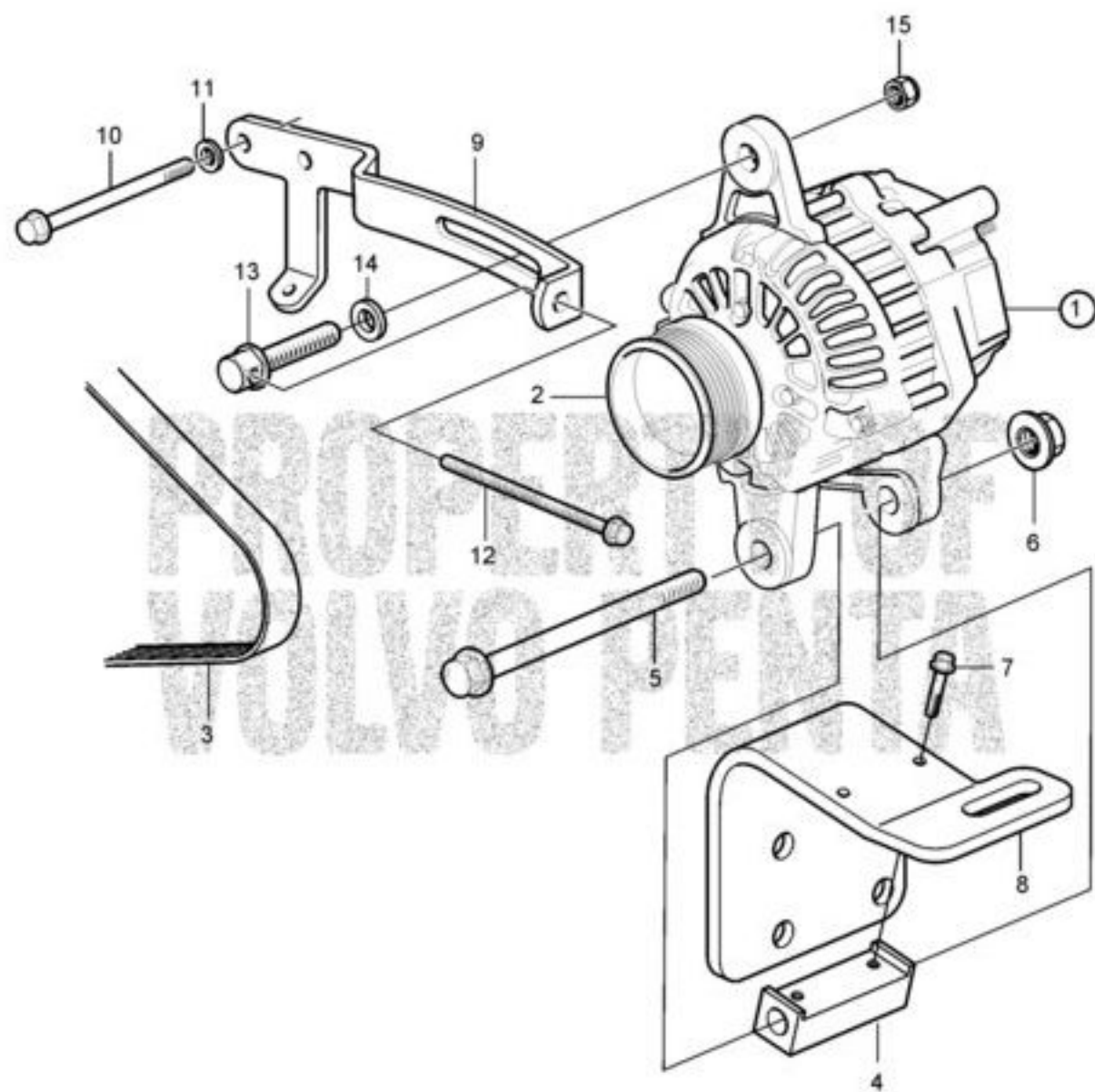


#	Description	PartNo.	Qty	Price/each (DKK)
1	Alternator 14V, 60A	873770	1	3 380,00
1	Alternator, exch 14V, 60A Replaced by: Generator	3803444	1	Out of production 873770 1 3 380,00
1	Alternator, exch 14V, 60A Replaced by: Generator	3803444	1	Out of production 873770 1 3 380,00
1	Alternator 28V, 40A	872927	1	7 487,00
1	Alternator, exch 28V, 40A Replaced by: Generator	3803619	1	Out of production 872927 1 7 487,00
1	Alternator, exch 28V, 40A Replaced by: Generator	3803619	1	Out of production 872927 1 7 487,00
2	Pulley	841813	1	180,00
3	V-belt	977525	1	222,50
4	MOUNTING PLATE	3819248	1	1 627,50
5	Flange screw	946440	7	3,00
6	Anchorage	3580749	2	2 010,00
7	Rubber bushing	859273	2	571,25
8	Washer	859274	2	258,75
9	Flange screw	968553	2	15,63
10	Clamp	949746	1	14,25
11	Hexagon nut	955782	1	0,75
12	Flange nut	945408	2	2,00
13	Tensioning arm	3884026	1	1 348,75
14	Flange screw	861663	1	88,50
15	Hexagon screw	977820	1	8,13
16	Spacer sleeve	823497	1	109,75
17	Pulley	3581036	1	1 583,75
18	Spacer	3583572	2	800,00
19	Flange screw	965181	3	6,13
20	Washer	976944	3	1,11
21	Relay	1324492	1	148,00
22	Retainer	838455	1	73,50
23	Sealing ring	829714	1	6,75
24	Retainer	967583	1	23,25
25	Bulb	19923	1	13,13
26	Bulb socket	808175	1	61,38
27	Symbol strip	838457	1	37,25
28	Cable block	838542	1	840,00
29	Cable tie	948211	10	1,11

22952

# Volvo Penta Exploded view / schematic Alternator

D1-13A, D1-13B, D1-20A, D1-20B, D1-13F, D1-20F



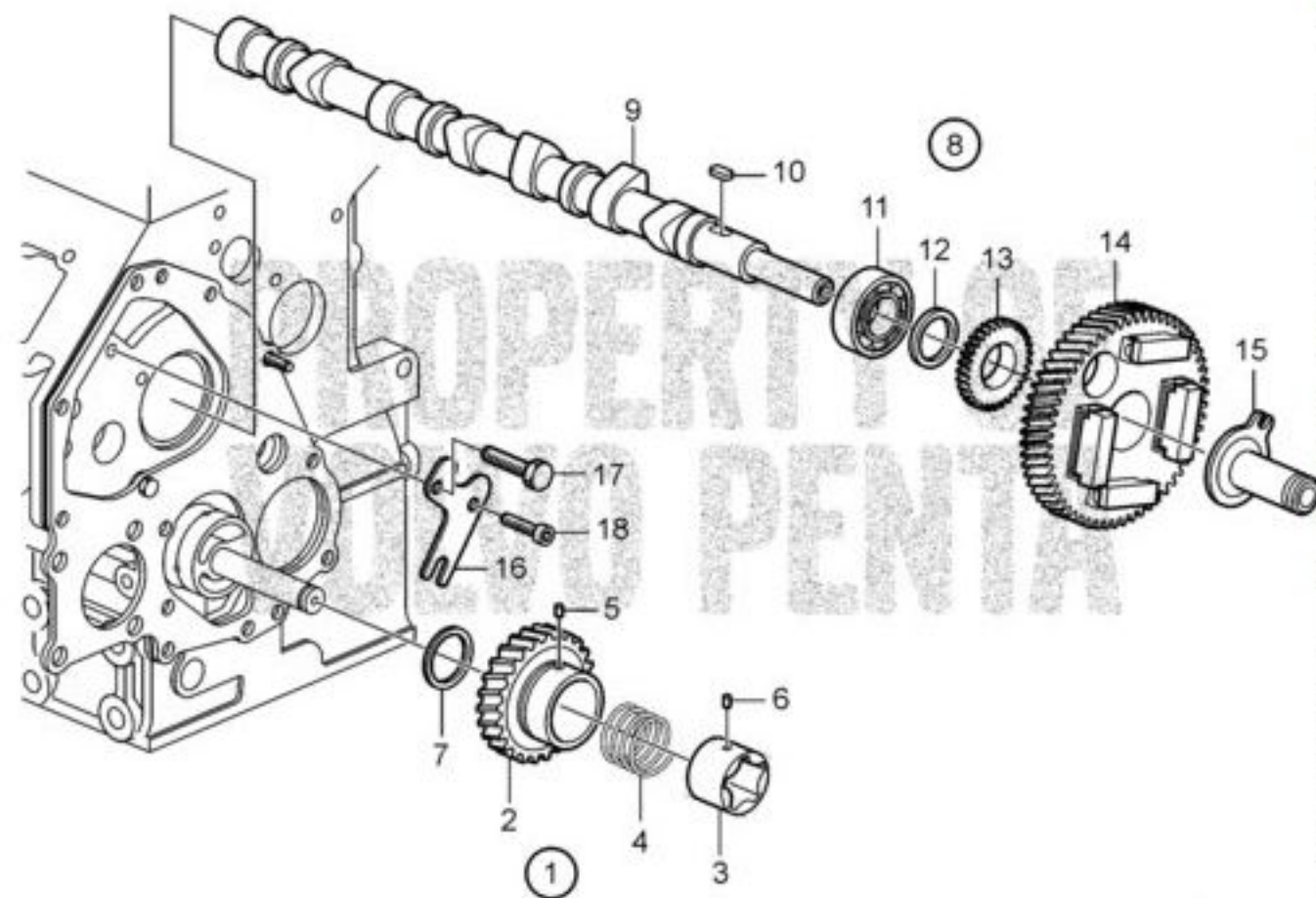
22910

#	Description	PartNo.	Qty	Price/each (DKK)
1	Alternator 14V 115A	3819662	1	6 603,75
1	Alternator, exch 14V 115A Replaced by: Generator	3803903	1	Out of production
1	Alternator, exch Replaced by: Generator	3819662	1	6 603,75
1	Alternator, exch Replaced by: Generator	3803903	1	Out of production
1	Alternator, exch Replaced by: Generator	3819662	1	6 603,75
2	Pulley			Out of production
3	Belt	3809625	1	109,75
4	Alternator bracket	3812711	1	746,25
5	Flange screw	978447	1	27,38
6	Flange nut	971096	1	4,25
7	Flange screw	946470	2	4,00
8	Engine anchorage, front Port side, D1-13			
8	Engine anchorage, front Port side, D1-20			
9	Tensioning arm	3809628	1	427,50
10	Screw D1-13	1346183	3	102,38
10	Screw D1-20	3887173	3	48,38
11	Spring washer D1-13	861913	3	2,63
12	Hexagon screw	21246605	1	183,75
13	Flange screw	861663	1	88,50
14	Washer	3580019	1	9,13
15	Flange nut	21246409	1	14,00



# Volvo Penta Exploded view / schematic Camshaft and Gears

D1-20A, D1-20B



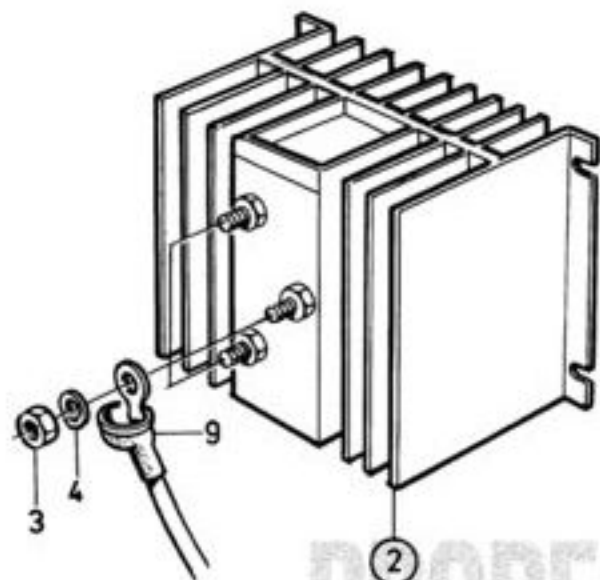
22941

#	Description	PartNo.	Qty	Price/each (DKK)
1	Gear	861987	1	1 888,75
	Replaced by 21541017			
1	Oil pump	21541017	1	2 343,75
2	• Idler gear		1	Out of production
3	• Rotor			Out of production
4	• Spring	861988	1	24,25
5	• Locating pin	3583723	3	14,00
6	• Bushing	3583721	3	75,38
7	Thrust washer	861986	1	28,88
8	Camshaft	3812104	1	6 771,25
9	• Camshaft		1	Out of production
10	• Woodruff key	861969	1	14,00
11	• Bearing	861984	1	468,75
12	• Spacer	861983	3	14,00
13	• Gear	861982	1	49,38
14	• Gear	861980	1	1 395,00
15	Sliding sleeve	861985	1	123,75
16	Plate	861991	1	48,38
17	Screw		1	Out of production
	Obsolete part			
18	Screw	861526	1	25,13

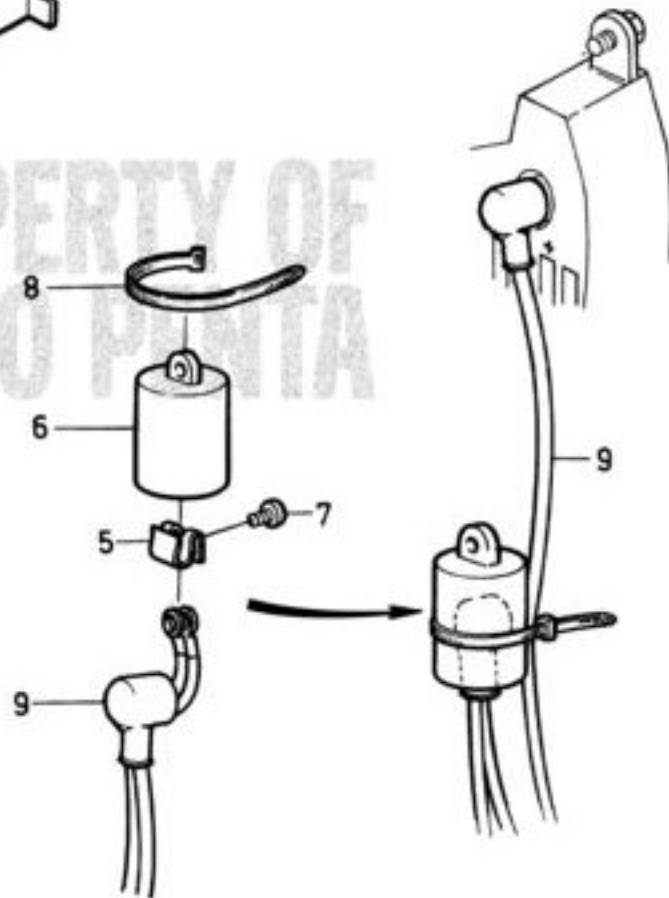
# Volvo Penta Exploded view / schematic Charging Distributor

## D2-40A, D2-40B, D2-40F

①



②

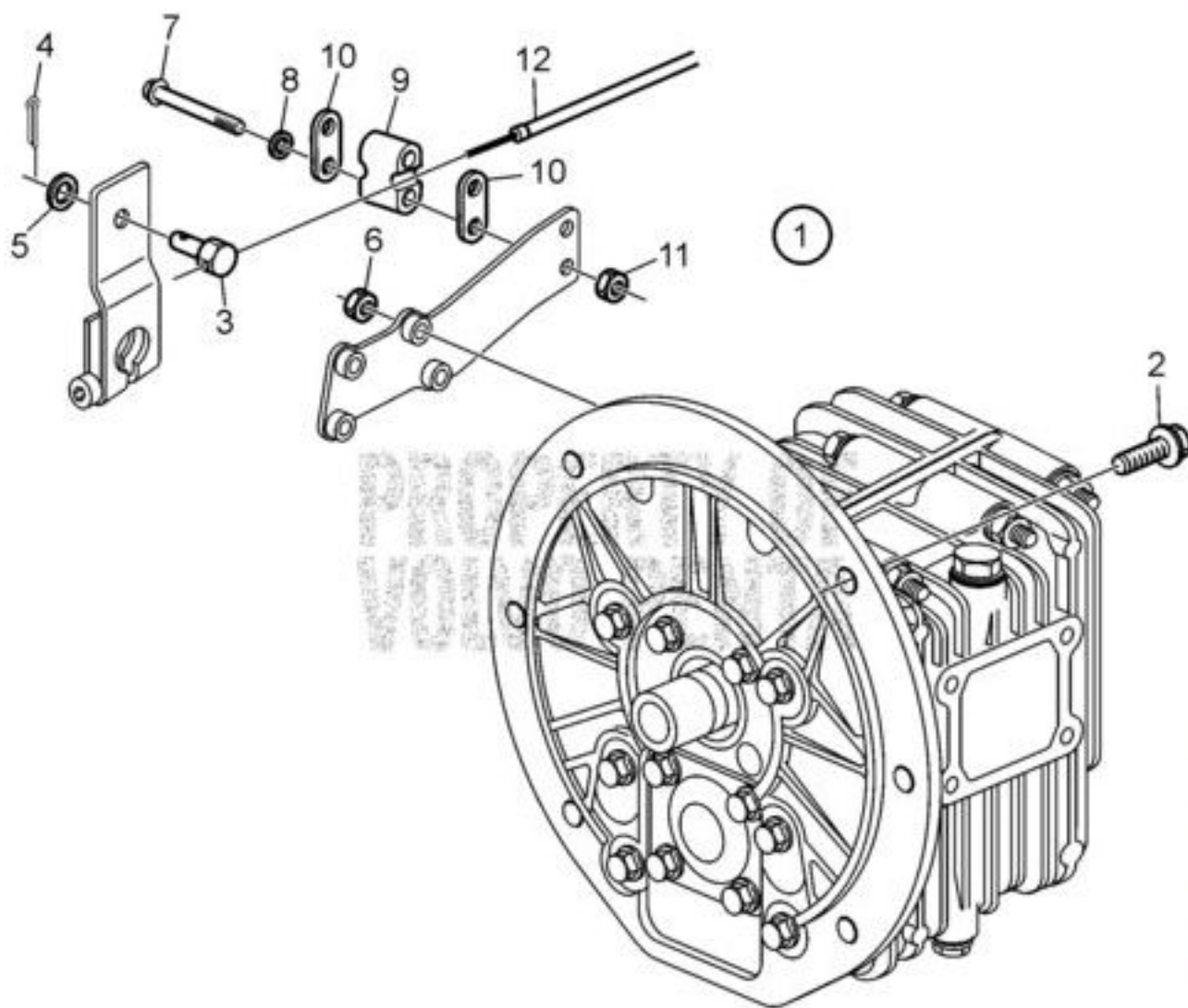


#	Description	PartNo.	Qty	Price/each (DKK)
1	Charge distributor For alternators 12-28V up to 160A. bulletin P-32-2-1	3840597	1	1 779,00
2	• Charge distributor		1	Out of production
3	Hexagon nut	955846	3	0,84
4	Spring washer	941906	3	0,60
5	Spring nut	859492	1	15,88
6	Protecting casing	859493	1	58,63
7	Cross recessed screw	955126	1	1,21
8	Cable tie	948211	1	1,11
9	Electrical Materials			



# Volvo Penta Exploded view / schematic Connection Kit for Reverse Gear, MS10A-B, MS10L-B

D1-13A, D1-13B, D1-20A, D1-20B, D1-30A, D1-30B, D1-13F, D1-20F, D1-30F



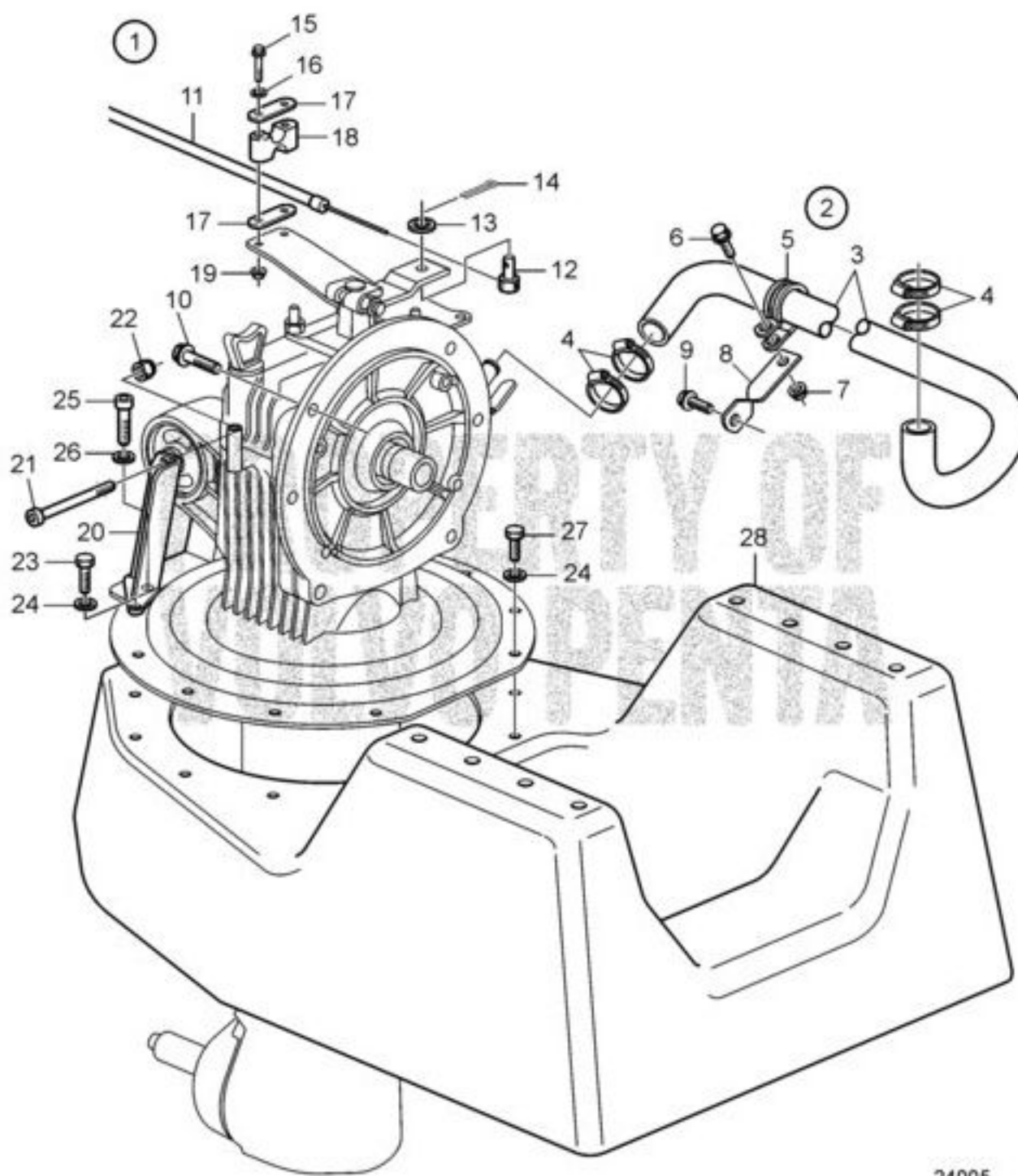
22929

#	Description	PartNo.	Qty	Price/each (DKK)
1	Reversing gear kit MS10A-B, ratio 2.35:1 Replaced by:	3809120	1	Out of production
	Backslag	3809124	1	24 227,50
1	Reversing gear kit MS10A-B, ratio 2.72:1 Replaced by:	3809121	1	Out of production
	Backslag	3809125	1	24 227,50
1	Reversing gear kit MS10L-B, ratio 2.35:1	3809122	1	21 018,75
1	Reversing gear kit MS10L-B, ratio 2.72:1	3809123	1	21 018,75
2	Flange screw	946329	6	4,63
3	Cube	814082	1	255,00
4	Split pin	17276	1	14,00
5	Spring washer	941906	1	0,60
6	Lock nut	945467	4	7,38
7	Six point socket scr	969439	2	3,25
8	Washer	940090	2	0,75
9	Washer	872076	2	13,50
10	Retainer	872074	2	24,25
11	Flange lock nut	949874	2	3,63
12	Shift cable			





# Volvo Penta Exploded view / schematic Connection Kit for S-drive, 130S-B, 130SR-B D1-13A, D1-13B, D1-20A, D1-20B, D1-30A, D1-30B, D2-40A, D2-40B, D1-13F, D1-20F, D1-30F, D2-40F



24005

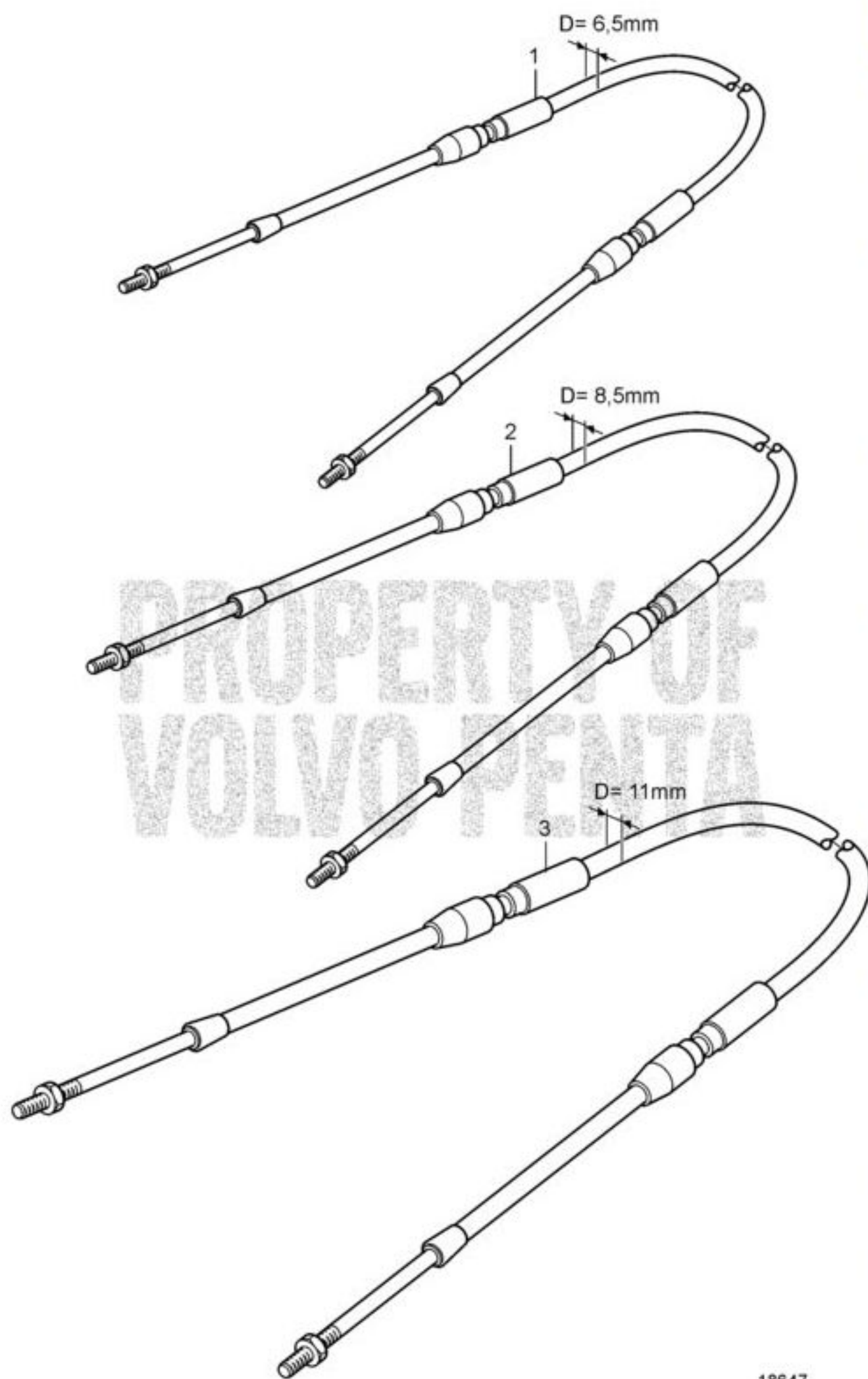
#	Description	PartNo.	Qty	Price/each (DKK)
1	Sail drive Ratio 2.19:1	3819867	1	51 252,50
2	Kit Replaced by: Anslutningsatts	3841379	1	Out of production 577,50
3	• Hose		1	Out of production
4	• Hose clamp	961666	4	24,00
5	• Clamp	952637	1	7,00
6	• Flange screw	946934	1	2,00
7	• Flange nut	945407	1	1,16
8	Bracket	354842	1	49,38
9	Flange screw		1	Out of production
10	Flange screw	946752	4	5,63
11	CONTROL CABLE			
12	Cube	3852329	1	75,00
13	Spring washer	941906	1	0,60
14	Split pin	17276	1	14,00
15	Six point socket scr	969439	2	3,25
16	Washer	940090	2	0,75
17	Washer	872076	2	13,50
18	Retainer	872074	1	24,25
19	Flange lock nut	949874	2	3,63
20	Bracket	3841849	1	2 158,75
21	Hexagon screw	970983	1	17,75
22	Lock nut	971084	1	3,63
23	Hexagon screw	963568	2	28,88
24	Washer	941670	10	4,13
25	Hex. socket screw	959240	2	5,88
26	Washer	853095	2	19,63
27	Hexagon screw	946730	8	15,00
28	Engine bed	3842284	1	6 472,50





# Volvo Penta Exploded view / schematic Control Cables, Type 233, 333, 443: Type 233

D1-13A, D1-13B, D1-20A, D1-20B, D1-30A, D1-30B, D2-40A, D2-40B, D1-13F, D1-20F, D1-30F, D2-40F: Type 233



18647

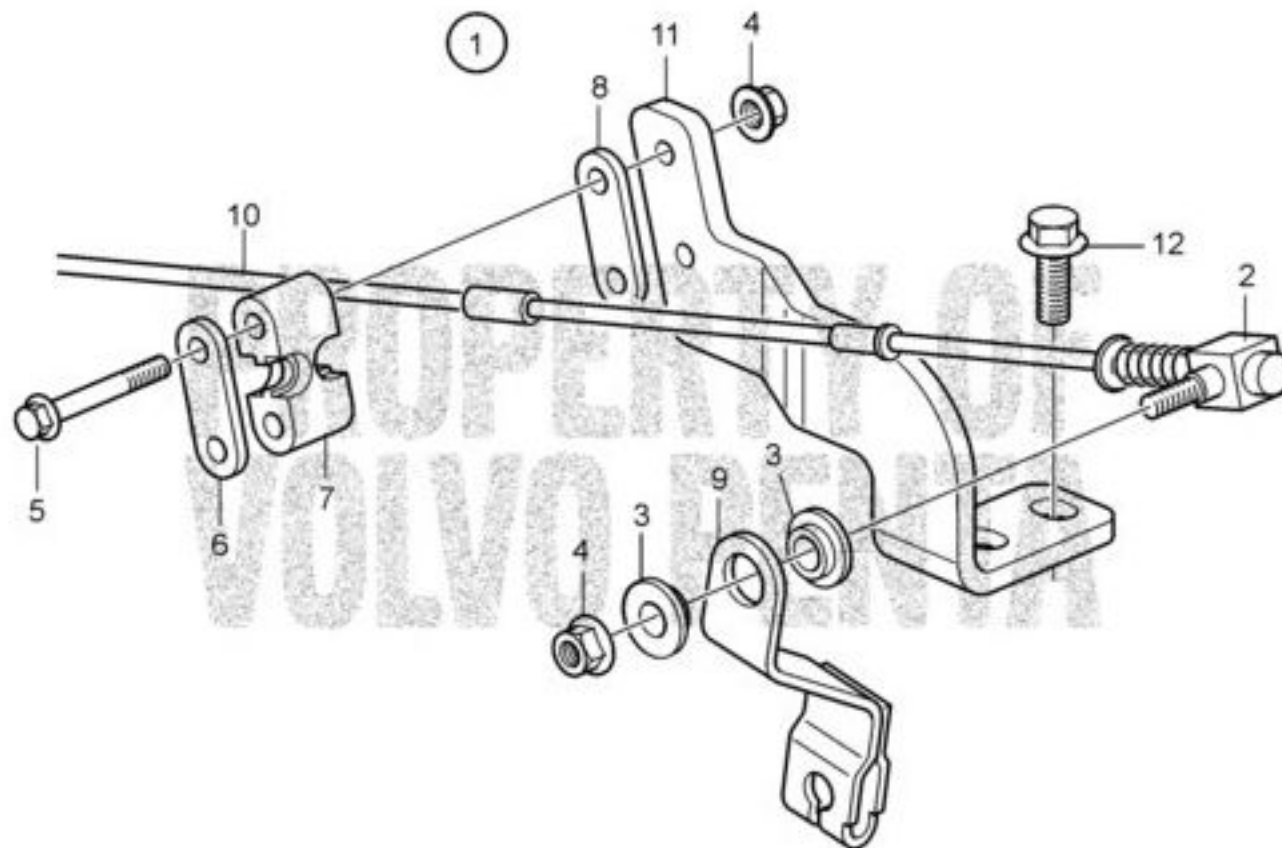
#	Description	PartNo.	Qty	Price/each (DKK)
1	CONTROL CABLE L=1250mm	1140131	1	336,25
1	CONTROL CABLE L=1500mm	1140132	1	Out of production
1	CONTROL CABLE L=1750MM	1140133	1	Out of production
1	CONTROL CABLE Obsolete part, L=2000mm		1	Out of production
1	CONTROL CABLE L=2250mm	1140135	1	346,25
1	CONTROL CABLE Obsolete part, L=2500mm		1	Out of production
1	CONTROL CABLE Obsolete part, L=2750mm		1	Out of production
1	CONTROL CABLE Obsolete part, L=3000mm		1	Out of production
1	CONTROL CABLE L=3250mm	1140139	1	377,50
1	CONTROL CABLE L=3500mm	1140140	1	Out of production
1	CONTROL CABLE Obsolete part, L=3750mm		1	Out of production
1	CONTROL CABLE Obsolete part, L=4000mm		1	Out of production
1	CONTROL CABLE Obsolete part, L=4250mm		1	Out of production
1	CONTROL CABLE Obsolete part, L=4500mm		1	Out of production
1	CONTROL CABLE L=4750mm	1140145	1	425,00
1	CONTROL CABLE Obsolete part, L=5000mm		1	Out of production





# Volvo Penta Exploded view / schematic Control Connection

## D1-20A, D1-20B

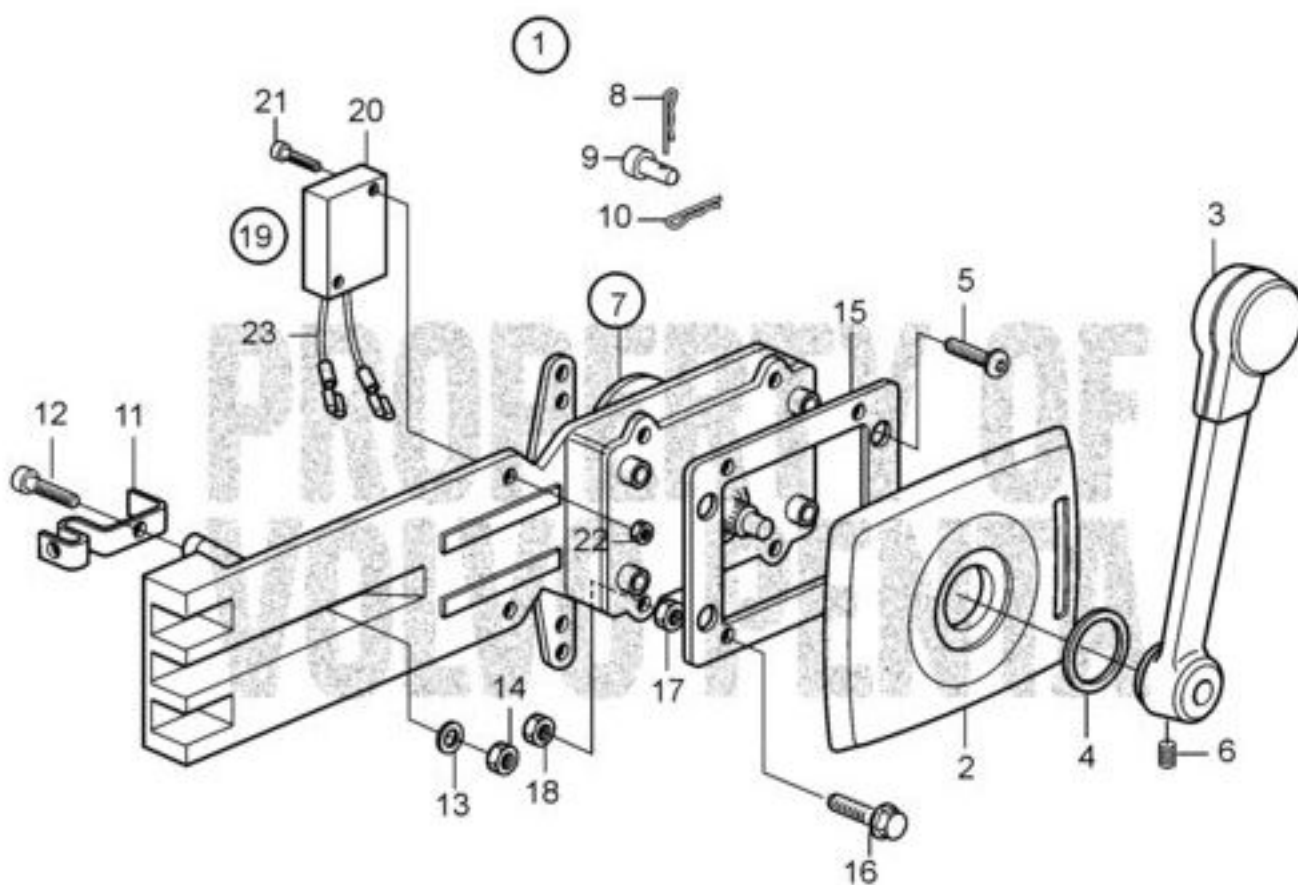


24191

#	Description	PartNo.	Qty	Price/each (DKK)
1	Connecting kit	3841287	1	347,50
2	• Cube	840692	1	Out of production
	Replaced by:			
	Justermutter	814083	1	8,25
	Fjäder	814086	1	22,38
	Tärning	840669	1	44,75
	Hållare	968766	1	15,88
3	• Spacer washer	843105	2	73,50
4	• Flange lock nut	949874	3	3,63
5	• Six point socket scr	969439	2	3,25
6	• Washer	819068	1	42,38
7	• Retainer	872074	1	24,25
8	• Washer	872076	1	13,50
9	Intermediate lever	3580036	1	163,75
10	CONTROL CABLE			
11	Bracket	3817482	1	310,00
12	Flange screw	946440	2	3,00

# Volvo Penta Exploded view / schematic Control for Side Installation, PC741, Sail Boat

D1-13A, D1-13B, D1-20A, D1-20B, D1-30A, D1-30B, D2-40A, D2-40B, D1-13F, D1-20F, D1-30F, D2-40F



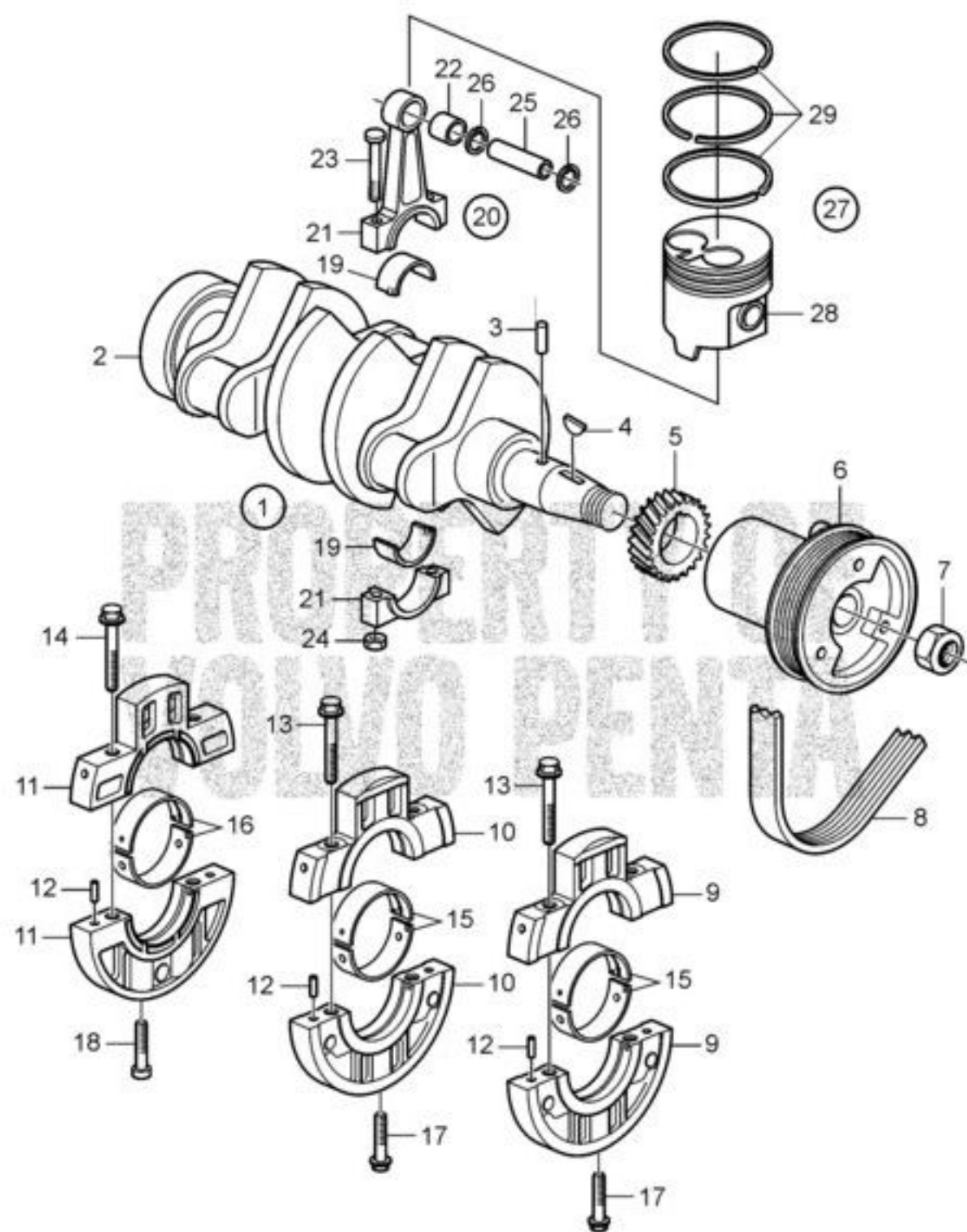
22854

#	Description	PartNo.	Qty	Price/each (DKK)
1	Mounting kit	1140093	1	492,00
2	• Cover	853713	1	108,50
3	• Hand lever	839521	1	1 191,25
4	• Washer	1140094	1	12,50
5	• Cross recessed screw	961330	4	3,13
6	• Lock screw	839693	1	101,38
7	Control mechanism	1140095	1	1 192,00
8	• Split pin	17253	2	14,00
9	• Cube	839638	2	109,75
10	• Clip	852924	1	31,63
11	• Retainer	853423	1	89,38
12	• Screw	839664	1	12,13
13	• Washer	940275	1	5,25
14	• Lock nut	946435	1	Out of production
	Replaced by:			
	Låsmutter	984456	1	28,88
15	• Attaching plate		1	Out of production
16	• Hexagon screw	963548	4	4,38
17	• Nut		4	Out of production
18	• Lock nut	946435	4	Out of production
	Replaced by:			
	Låsmutter	984456	4	28,88
19	Neutral position con	855352	1	307,00
20	• Toggle switch	850200	1	425,00
21	• Cross recessed screw	946177	2	0,84
22	• Hexagon nut	947536	2	3,00
23	• CABLES AND TERMINALS			



# Volvo Penta Exploded view / schematic CrankMechanism

D1-20A, D1-20B, D1-20F

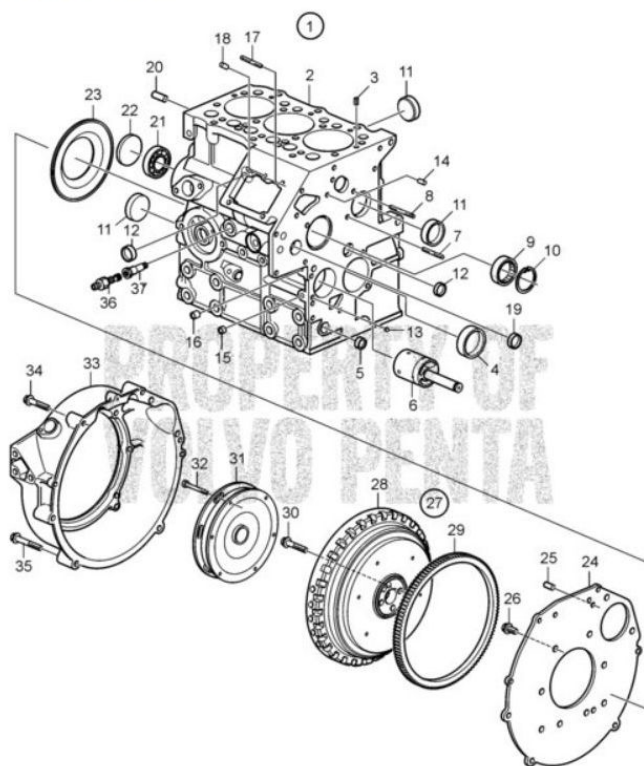


22871

#	Description	PartNo.	Qty	Price/each (DKK)
1	Crankshaft	3809706	1	11 886,25
2	• Crankshaft		1	Out of production
3	• Key	861934	1	24,25
4	• Key	3812129	1	Out of production
	Replaced by:			
	Woodruffkil	861969	1	14,00
5	• Gear		1	Out of production
	Obsolete part			
6	Pulley	3809648	1	2 018,75
7	Nut	861977	1	48,38
8	Drive belt			
9	BEARING CAP		1	Out of production
10	BEARING CAP		1	Out of production
	Obsolete part			
11	BEARING CAP	3884522	1	1 013,75
12	Pin		6	Out of production
13	Screw	3884511	4	14,00
14	Screw	3884523	2	104,25
15	Main bearing kit	3884516	2	Out of production
	D1-20A, D1-20B			
	Replaced by:			
	Ramlager	21319767	2	551,25
16	Main bearing kit	3884517	1	345,00
17	Screw	861952	2	14,00
18	Screw	861953	2	14,00
19	Bearing shell kit	3884557	1	722,50
20	Connecting rod	3812139	3	1 191,25
	Complete			
21	• Big end bearing		1	Out of production
22	• Bushing	861963	1	211,25
23	• Screw	861964	2	37,25
24	• Nut	861965	2	14,00
25	Gudgeon pin	861960	3	85,63
26	Lock ring	861961	6	14,00
27	Piston kit	3812468	3	3 125,00
28	• Piston		1	Out of production
29	• Piston ring	3812472	1	1 265,00

# Volvo Penta Exploded view / schematic Cylinder Block and Flywheel Housing

D1-20A, D1-20B



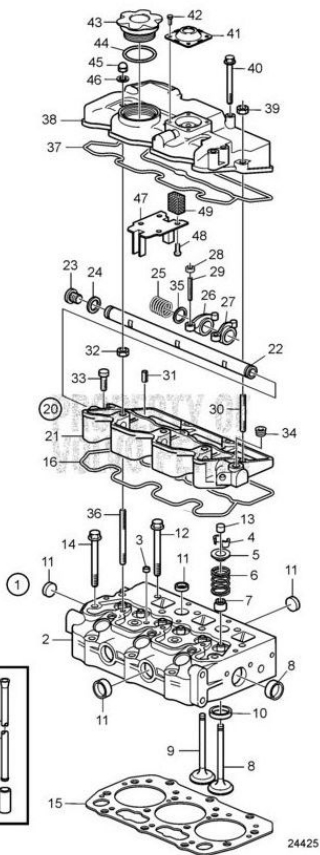
24008

#	Description	PartNo.	Qty	Price/each (DKK)
1	Cylinder block		1	Out of production
2	• Cylinder block		1	Out of production
3	• Spring pin	861818	1	48,38
4	• Bushing (3809705)	21185006	1	242,50
5	• Cap	3886427	1	24,25
6	• Shaft		1	Out of production
	Replaced by 21541017, Obsolete part			
6	Oil pump	21541017	1	2 343,75
7	• Stud	3583709	1	66,13
8	• Stud	3583708	1	37,25
9	• Bearing	861814	1	231,25
10	• Lock ring	3580226	1	24,25
11	• Plug blank	3886429	5	Out of production
	Replaced by:			
	Plugg	21281430	5	89,38
12	• Cap	3886428	2	24,25
13	• Plug	861805	1	14,00
14	• Dowel		1	Out of production
15	• Plug	3807215	2	14,00
16	• Plug	861806	1	14,00
17	• Stud	3884526	1	58,63
18	• Pin		1	Out of production
19	• Plug	3884973	1	75,38
20	• Pin		1	Out of production
21	• Ball bearing	3884972	1	Out of production
	Replaced by 861812			
	Replaced by:			
	Kullager	11010	1	200,00
21	• Bearing	861812	1	Out of production
	Replaced by:			
	Kullager	11010	1	200,00
22	• Expansion plug	861813	1	37,25
23	• Sealing ring	861823	1	280,00
24	• Rear plate	3818597	1	1 340,00
25	• Pin		2	Out of production
26	• Flange screw	946440	10	3,00
27	• Flywheel Complete	3840878	1	15 615,00
28	• Flywheel		1	Out of production
29	• Gear ring	861973	1	1 135,00
30	• Screw	861974	4	24,25
31	• Flexible Coupling	3840422	1	5 692,50
32	• Hex. socket screw	959211	6	19,63
33	• Flywheel housing	3818550	1	Out of production
	Replaced by:			
	Svånghjulsåpa	21140575	1	2 335,00
34	• Flange screw	946671	1	4,13
35	• Flange screw	965180	5	5,50
36	• Draining nipple	3583822	1	66,13
37	• Adapter	3886423	1	632,50



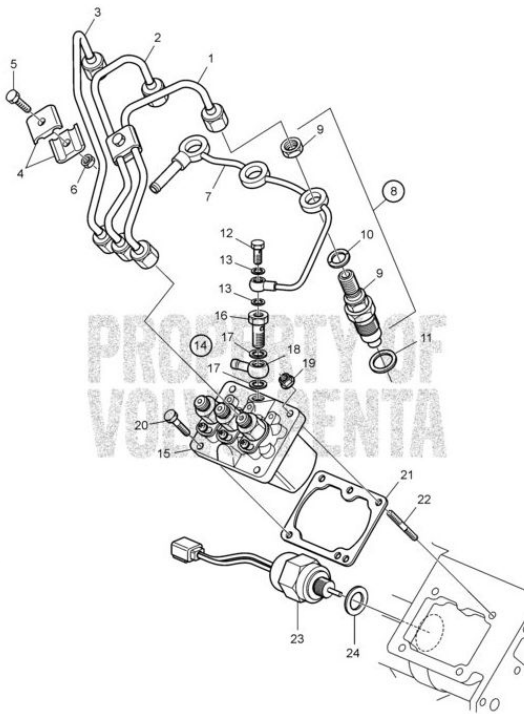
# Volvo Penta Exploded view / schematic Cylinder Head

## D1-20A, D1-20B, D1-20F



#	Description	PartNo.	Qty	Price/each (DKK)
1	Cylinder Head	3803892	1	10 240,00
2	· Cylinder Head		1	Out of production
3	· Cap	3886428	2	24,25
4	· Valve spring washer	861862	6	37,25
5	· Valve cone	861863	12	14,00
6	· Valve spring	861861	6	23,25
7	· Valve stem seal	861860	6	37,25
8	· Inlet valve	3884527	3	Out of production
	Replaced by:			
	Inloppsventil	3809662	3	145,00
9	· Exhaust valve	861859	3	123,75
10	· Valve seat ring	3886394	6	318,75
11	· Plug blank	3886430	8	24,25
12	Screw	861866	11	14,00
13	Valve cap	3581293	6	24,25
14	Screw	861867	3	14,00
15	Cylinder head gasket TH=1.2mm	3812109	1	533,75
15	Cylinder head gasket TH=1.3mm	3886431	1	542,50
16	Gasket	3812130	1	240,00
17	Push rod	3809670	6	96,75
18	Tappet	861827	5	245,00
19	Valve tappet	888184	1	126,25
20	Rocker arm	3812102	1	4 483,75
21	· Bracket		1	Out of production
22	· Rocker arm shaft	3812101	1	783,75
23	· Plug	3812105	1	97,75
24	· O-ring	861851	1	48,38
25	· Spring	3809640	2	24,25
26	· Rocker arm	3809639	3	560,00
27	· Rocker arm	3809638	3	560,00
28	· Nut	861878	6	14,00
29	· Screw	861877	6	84,63
30	· Stud	3840809	2	25,13
31	· Pin	3886069	2	4,38
32	Flange nut	945407	3	1,16
33	Screw	3840802	2	14,00
34	Plug	3809690	1	14,00
35	Adjusting washer	861883	4	14,00
36	Stud	3809663	3	73,50
37	Gasket	3812131	1	212,50
38	Cover	3812107	1	2 808,75
39	Flange nut	945407	2	1,16
40	Screw	3809669	3	58,63
41	Valve	3809668	1	202,50
42	Screw	3583659	4	3,38
43	Cover	21311518	1	152,50
44	O-ring	861897	1	24,25
45	Cap nut	21246490	3	21,50
46	Washer	3840804	3	19,63
47	Support plate	3887185	1	110,75
48	Screw	3583663	4	14,00
49	Gauze	3887184	1	62,38

# Volvo Penta Exploded view / schematic Fuel System D1-20A, D1-20B, D1-20F

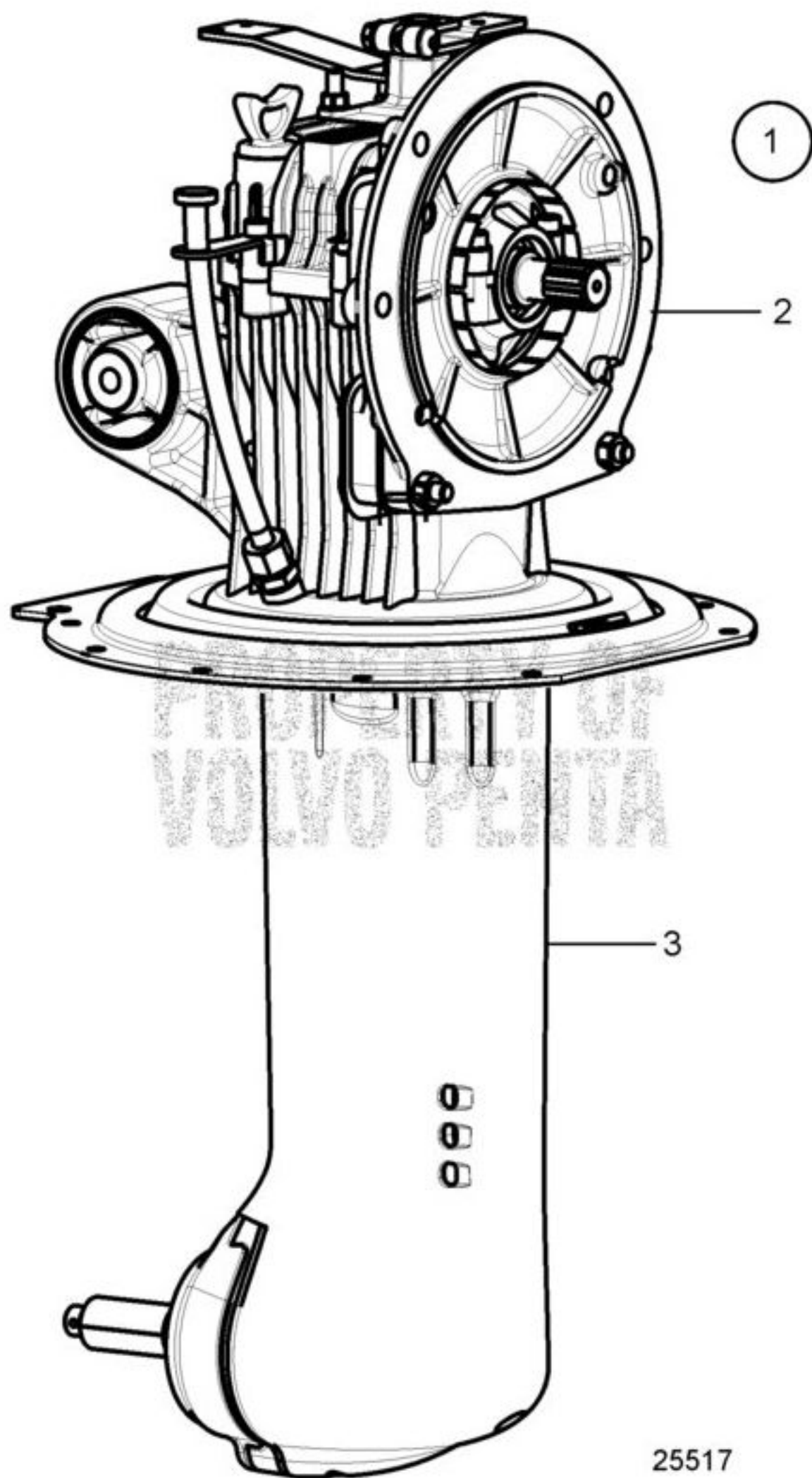


22879

#	Description	PartNo.	Qty	Price/each (DKK)
1	Pressure pipe Cylinder 1	3809666	1	335,00
2	Delivery pipe Cylinder 2	3812115	1	335,00
3	Delivery pipe Cylinder 3	3812116	1	615,00
4	Clamp	3580082	4	48,38
5	Flange screw	947542	2	2,38
6	Flange nut	945407	2	1,16
7	Leak-off pipe	3849026	1	2 232,50
8	Injector	3801339	3	2 186,25
9	Injector		1	Out of production
10	Gasket	3580631	3	61,38
11	Gasket	3580077	3	24,25
12	Screw	3580094	1	37,25
13	Washer	861841	2	17,75
14	Injection pump	3803899	1	7 775,00
15	Injection pump		1	Out of production
15	Injection pump	3803899	1	7 775,00
16	Hollow screw	3580628	1	185,00
17	Gasket	11994	2	6,25
18	Banjo nipple	3580627	1	160,00
19	Flange nut	945407	2	1,16
20	Screw	3580013	2	18,63
21	Shim	3887167	1	96,75
	T=0.20mm			
21	Shim	21190855	1	99,63
	TH=0.25mm, D1-20F			
21	Shim	3887168	1	136,25
	T=0,28mm			
21	Shim	21190856	1	99,63
	TH=0.35mm, D1-20F			
21	Shim	3887169	1	73,50
	TH=0.015"			
21	Shim	3887170	1	73,50
	T=0.49mm			
21	Shim	3887171	1	148,75
	T=0.90mm			
22	Stud			
	D1-20A, D1-20B			
22	Stud			
	D1-20F			
23	stop solenoid	3584127	1	1 627,50
24	Sealing ring	3580092	1	Out of production
	Replaced by:			
	Tatningsring	21424327	1	93,00



**Volvo Penta Exploded view / schematic Drive 130S-A, 130S-B, 130SR-A,130SR-B,  
Complete**  
130S-A, 130S-B, 130SR-A, 130SR-B



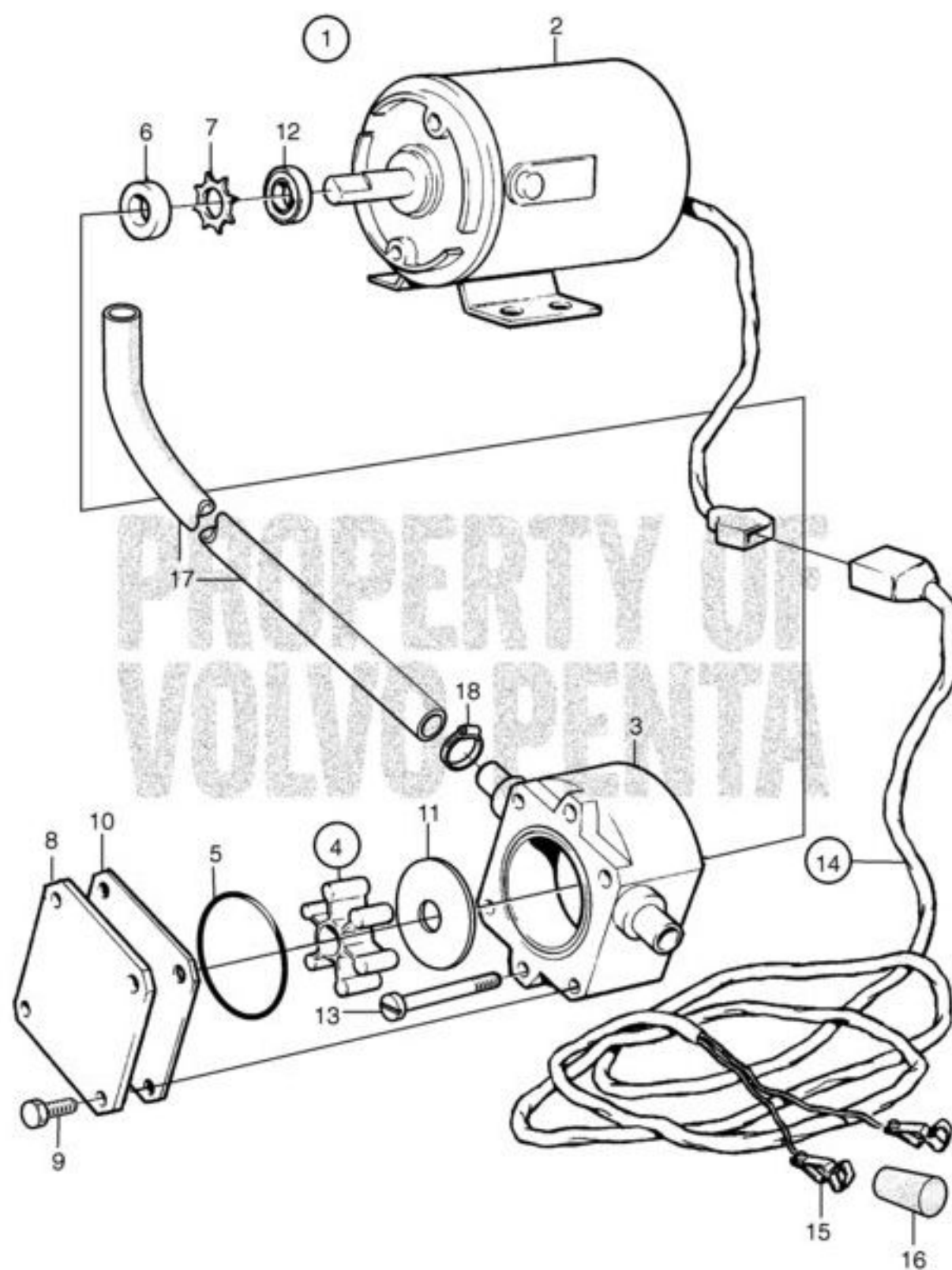
#	Description	PartNo.	Qty	Price/each (DKK)
1	Sail drive Ratio 2.19:1	3819867	1	51 252,50
1	Drive Ratio 2.47:1 Replaced by: Drevsats	3589560	1	Out of production 54 182,50
2	• Upper gear Ratio 2.19:1 Replaced by: Övre växel	3589555	1	Out of production 46 128,75
2	• Upper gear Ratio 2.47:1	3589664	1	46 128,75
3	• Gear housing Ratio 2.19:1	3589556	1	25 622,50
3	• Gear housing Ratio 2.47:1	3589557	1	25 622,50

25517



# Volvo Penta Exploded view / schematic Electrical Oil Bilge Pump 12V

D1-13A, D1-13B, D1-20A, D1-20B, D1-30A, D1-30B, D2-40A, D2-40B, D1-13F, D1-20F, D1-30F, D2-40F

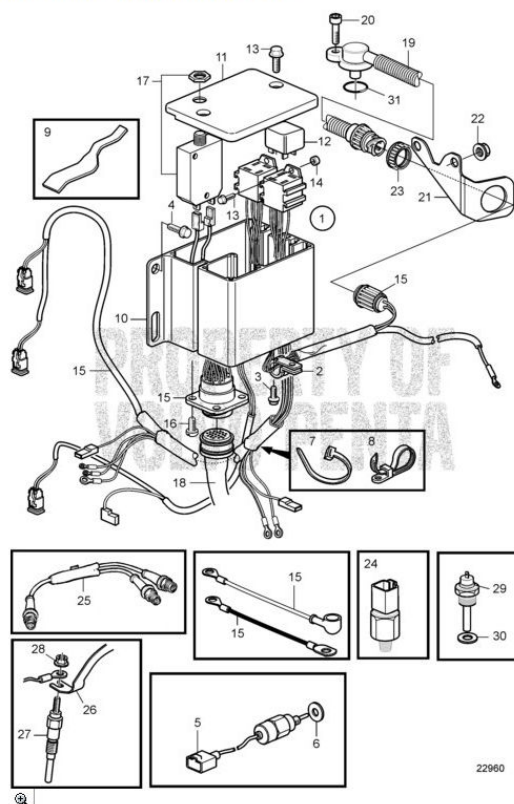


#	Description	PartNo.	Qty	Price/each (DKK)
1	Oil bilge pump 12V	843114	1	3 678,00
2	• Oil bilge pump	842855	1	2 697,50
3	• • Pump housing Obsolete part		1	Out of production
4	• • Impeller kit	844022	1	468,75
5	• • O-ring		1	Out of production
6	• • Sealing ring		1	Out of production
7	• • Lock ring		1	Out of production
8	• • Cap	844018	1	206,25
9	• • Screw	844021	4	7,63
10	• • Wear washer	844017	1	120,00
11	• • Wear washer	844016	1	152,50
12	• • Deflector ring Obsolete part		1	Out of production
13	• • Six point socket scr (847464)	969518	2	3,50
14	• Cable block	843113	1	1 981,25
15	• • Clip	844280	2	81,88
16	• • Insulation BLACK		1	Out of production
16	• • Insulation Red		1	Out of production
17	• Hose	949100	0	565,00
18	• Hose clamp	943471	3	14,00



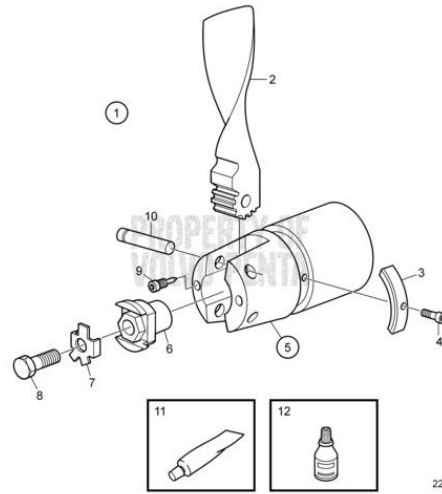
# Volvo Penta Exploded view / schematic Electrical System

D1-13A, D1-20A, D1-30A, D2-40A



#	Description	PartNo.	Qty	Price/each (DKK)
1	Electrical System	3817433	1	2 986,25
2	• Clamp	947191	1	13,00
3	• Flange screw	947107	1	2,63
4	• Flange screw	946544	2	2,00
5	• stop solenoid	3584127	1	1 627,50
6	• Sealing ring	3580092	1	Out of production
	Replaced by:			
	Tätningsring	21424327	1	93,00
7	• Cable tie	948211	6	1,11
8	• Cable tie	948616	1	3,50
9	• Spring	3812709	1	Out of production
10	Electrical distribut	3812685	1	407,50
11	Cap	3812683	1	49,38
12	Relay	873765	2	Out of production
	Replaced by:			
	Relä	21400091	2	119,13
13	Flange screw	948663	4	2,88
14	Hexagon nut	955780	2	0,43
15	Cable harness	3809732	1	1 767,50
16	• Cross recessed screw	955119	4	1,88
17	Fuse	968821	1	545,00
18	Extension cable L=3000mm	846648	1	987,00
18	Extension cable L=5000MM	846649	1	1 956,00
18	Extension cable L=7000MM	846650	1	2 431,00
18	Extension cable L=9000MM	873838	1	2 859,00
18	Extension cable L=11000mm	873839	1	3 008,00
19	Sensor	3944124	1	1 167,50
20	Hex. socket screw	963684	1	7,38
21	Bracket		1	Out of production
22	Screw		2	Out of production
23	Ring	3963413	1	22,63
24	Pressure switch (3808796)	21250645	1	683,75
25	Distributing contact For double steering positions.	1140598	1	2 635,00
26	Current bar D1-13	3809642	1	288,75
26	Current bar D1-20	3812103	1	316,25
26	Current bar D1-30	3883705	1	247,50
26	Current bar D2-40	3886459	1	565,00
27	Glow plug D1-13 Replaced by: Glödstift	3809641	2	Out of production
	Glödstift	21192358	2	803,75
27	Glow plug D1-20, D1-30 Replaced by: Glödstift	3809641	3	Out of production
	Glödstift	21192358	3	803,75
27	Glow plug D2-40 Replaced by: Glödstift	3809641	4	Out of production
	Glödstift	21192358	4	803,75
28	Nut D1-13	3883704	2	14,00
28	Nut D1-20, D1-30	3883704	3	14,00
28	Nut D2-40	3883704	4	14,00
29	Temperature sensor	827151	1	475,00
30	Gasket	947624	1	8,50
31	O-ring	974673	1	15,00

**Volvo Penta Exploded view / schematic Folding Propeller, 2-blade**  
**D1-13A, D1-13B, D1-20A, D1-20B, D1-30A, D1-30B, D2-40A, D2-40B, D1-13F, D1-20F, D1-30F, D2-40F**



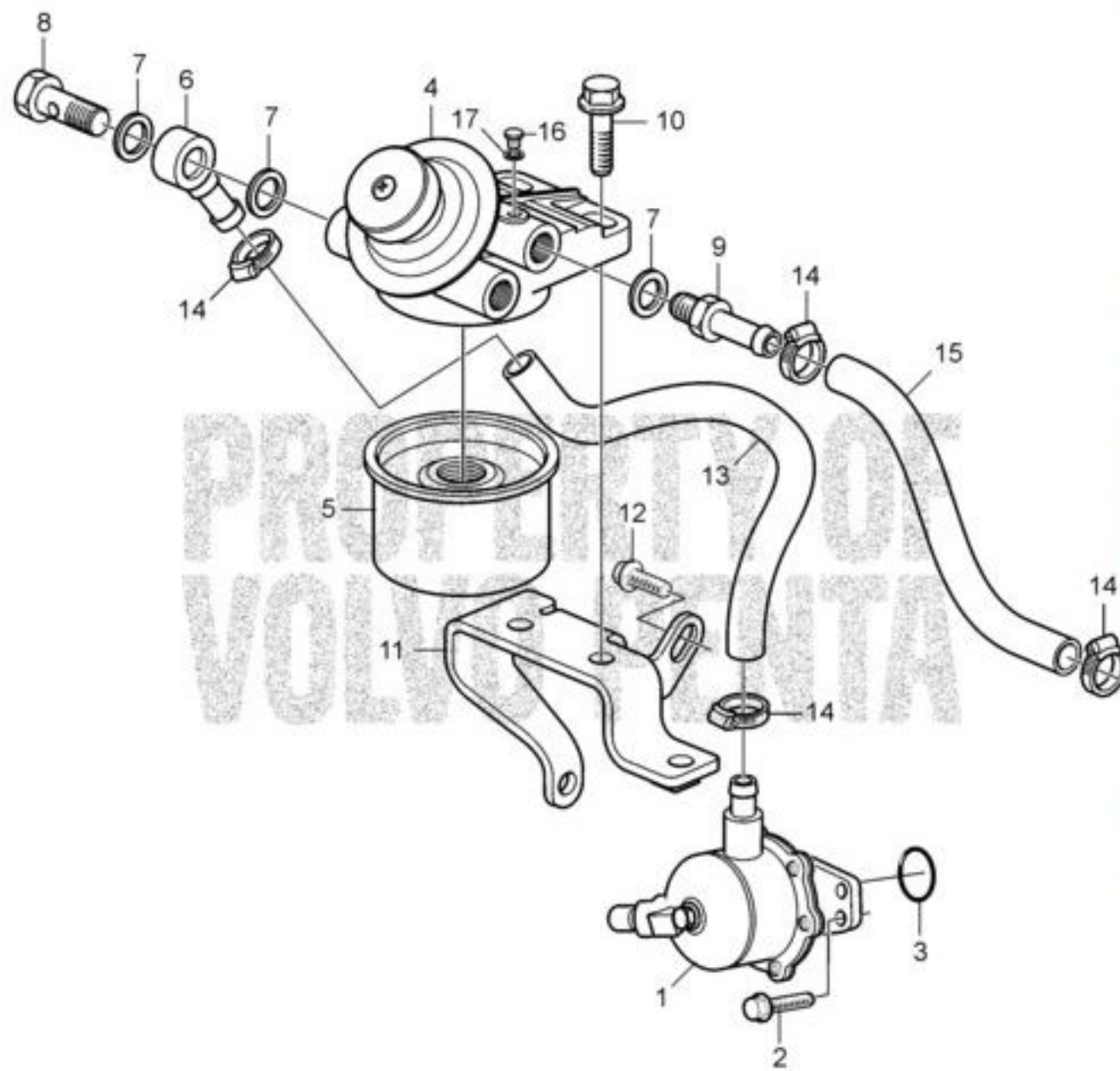
22351

#	Description	PartNo.	Qty	Price/each (DKK)
1	Propeller		1	Out of production
	14x6, Obsolete part			
1	Propeller		1	Out of production
	14x8 (3855562), Obsolete part			
1	Propeller		1	Out of production
	15x9 (3855563), Obsolete part			
1	Propeller		1	Out of production
	16x11 (3855565), Obsolete part			
1	Propeller		1	Out of production
	17X13, Obsolete part			
1	Propeller		1	Out of production
	17x14 (3855567), Obsolete part			
2	Propeller	872876	1	4 703,00
	14x6			
2	Propeller	872877	1	4 703,00
	14X8			
2	Propeller	872878	1	4 703,00
	15x9			
2	Propeller	872880	1	4 703,00
	16x11			
2	Propeller	872881	1	4 703,00
	17X13			
2	Propeller blade kit	873536	1	4 703,00
	17X14			
2	Propeller	872882	1	4 703,00
	17x15			
2	Propeller blade kit		1	Out of production
	17x17, Obsolete part			
3	Zinc anode kit	3858399	1	334,00
3	Magnesium anode kit	3858400	1	606,00
4	· Hex. socket screw	963677	3	5,13
5	Hub kit	3858849	1	3 138,00
6	· Propeller nut	3584466	1	373,00
	(3851993)			
7	· Lock washer	3851994	1	36,00
8	· Hexagon screw	946730	1	15,00
9	· Screw	3855529	2	96,00
10	· Shaft	3855528	2	215,00
11	Lubricating grease 25G	828250	1	35,00
	bulletin P-18-4-6			
12	Locking fluid	1161053	1	131,00



# Volvo Penta Exploded view / schematic Fuel Filter and Feed Pump

D1-20A, D1-20B, D1-20F

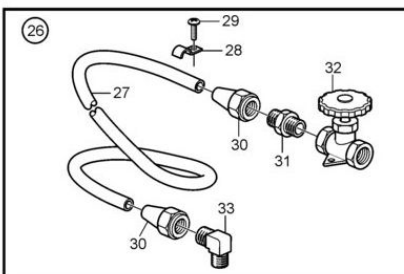
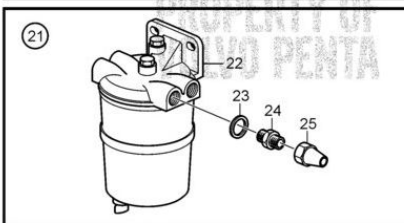
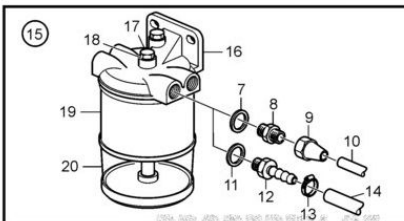
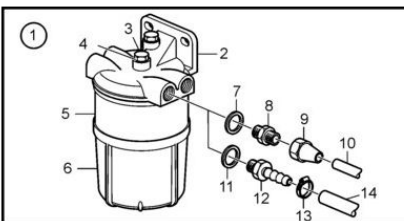


#	Description	PartNo.	Qty	Price/each (DKK)
1	Feed Pump	3584126	1	Out of production Replaced by 21132189 Replaced by:
	Matarpump	21132189	1	1 246,25
1	Feed Pump	21132189	1	1 246,25
2	Flange screw	945358	2	1,75
3	O-ring	3589332	1	16,75
4	Fuel filter	3584125	1	1 107,50
5	Fuel filter	861477	1	246,00
6	Banjo nipple	3580101	1	96,75
	D1-20A, D1-20B			
6	Connector	21190843	1	118,13
	D1-20F			
7	Gasket	969011	3	8,50
8	Hollow screw	3580098	1	123,75
	D1-20A, D1-20B			
8	Banjo nipple	3886416	1	280,00
	D1-20F			
9	Nipple	3809680	1	73,50
10	Flange screw	946329	2	4,63
11	Bracket	3884306	1	392,50
	(3809651)			
12	Flange screw	946440	2	3,00
13	Hose	3883328	1	96,75
14	Hose clamp	961664	4	24,00
15	Hose	3887197	1	97,75
16	Air nipple	3589276	1	39,13
17	Gasket	11991	1	2,50

22944



**Volvo Penta Exploded view / schematic Fuel Filter and Water Separator**  
**D1-13A, D1-13B, D1-20A, D1-20B, D1-30A, D1-30B, D2-40A, D2-40B, D1-13F, D1-20F, D1-30F, D2-40F**



#	Description	PartNo.	Qty	Price/each (DKK)
1	Fuel filter	877766	1	1 267,00
	Fuel filter and water separator., Metal			
2	• Fuel filter		1	Out of production
	bulletin 50-11A			
3	• Hexagon screw	940113	1	3,38
4	• Gasket	11992	1	Out of production
	Replaced by:			
	Packning	947620	1	2,38
5	• Filter insert	3581078	1	93,00
6	• Bowl	3582499	1	296,25
7	Gasket	18817	2	6,50
8	Nipple	190962	2	139,00
	5/16"			
8	Nipple	954337	2	50,00
	3/8"			
9	Fitting nut	954322	2	49,00
	5/16"			
9	Fitting nut	954323	2	70,00
	3/8"			
10	Tube	954305	0	1 471,00
	Water separator., 5/16"			
	bulletin P-23-4-3			
10	Copper tube	1140062	0	2 589,00
	Water separator., 3/8"			
11	Gasket	957177	2	5,13
12	Hose nipple	3825000	2	94,00
13	Hose clamp	961664	2	24,00
14	Fuel hose	861057	0	109,00
	bulletin P-23-4-4			
15	Fuel filter	877767	1	768,00
	Plastic			
16	• Fuel filter		1	Out of production
17	• • Hexagon screw	940113	1	3,38
18	• • Gasket	11992	1	Out of production
	Replaced by:			
	Packning	947620	1	2,38
19	• • Filter insert	3581078	1	93,00
20	• • Bowl	3581189	1	257,50
21	Water separator	833972	1	1 025,00
22	• Water separator	833971	1	808,75
23	• Gasket	957177	2	5,13
24	• Nipple	191397	2	193,75
	5/16"			
24	• Nipple	941438	2	170,00
	3/8"			
25	• Fitting nut	954322	2	49,00
	5/16"			
25	• Fitting nut	954323	2	70,00
	3/8"			
26	Fuel pipe		1	Out of production
	Obsolete part, 5/16"			
	bulletin P-23-4-3			
27	• Tube	954305	1	1 471,00
	5/16", L=5000MM			
	bulletin P-23-4-3			
28	• Clamp	951189	15	1,50
29	• Flange screw	968476	15	1,21
30	• Fitting nut	954322	3	49,00
	5/16"			
31	• Nipple	954336	2	131,25
	5/16"			
32	• Faucet	3581708	1	737,50
33	• Elbow nipple	954343	1	Out of production

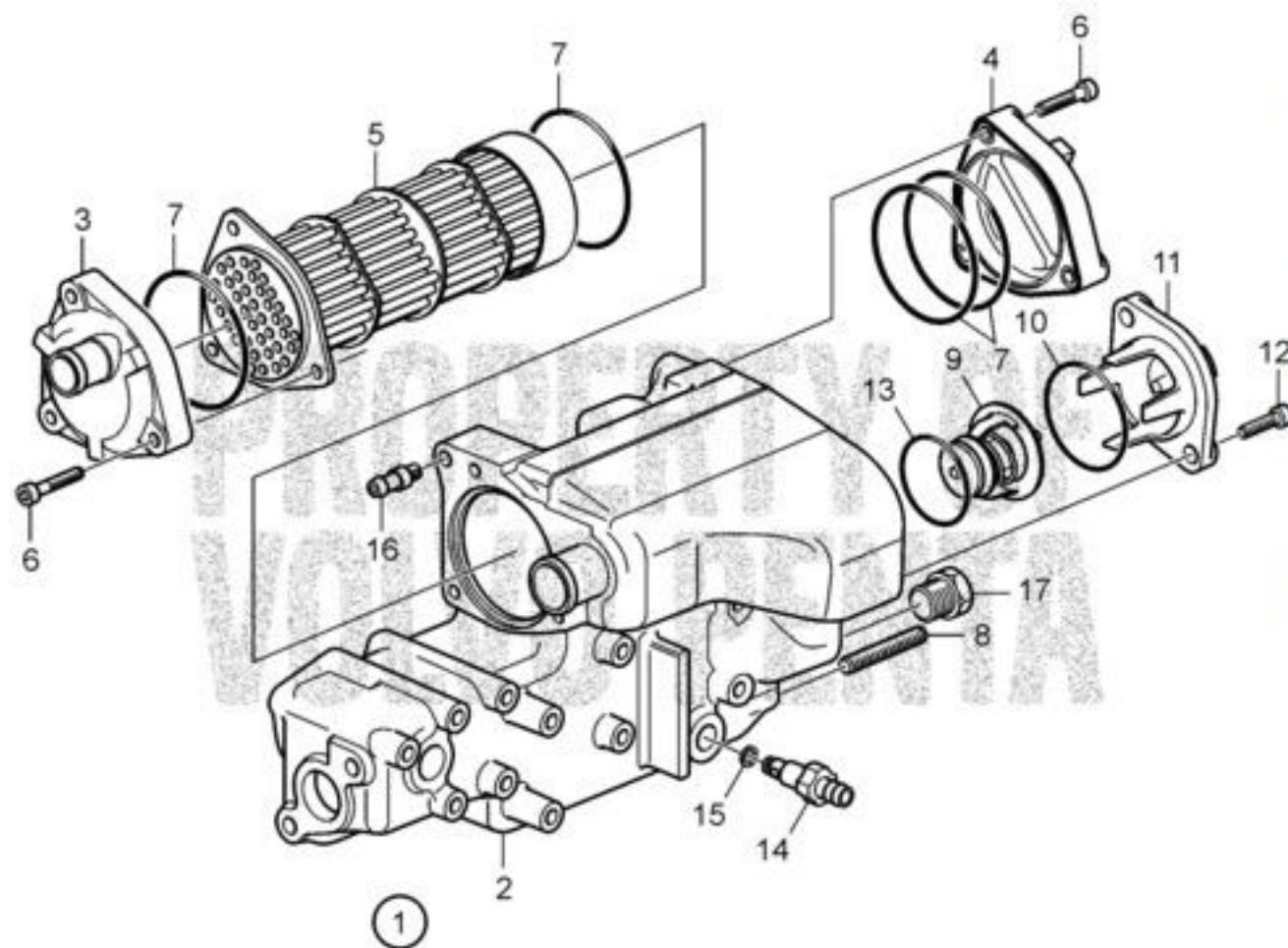
22464





# Volvo Penta Exploded view / schematic Heat Exchanger, Components

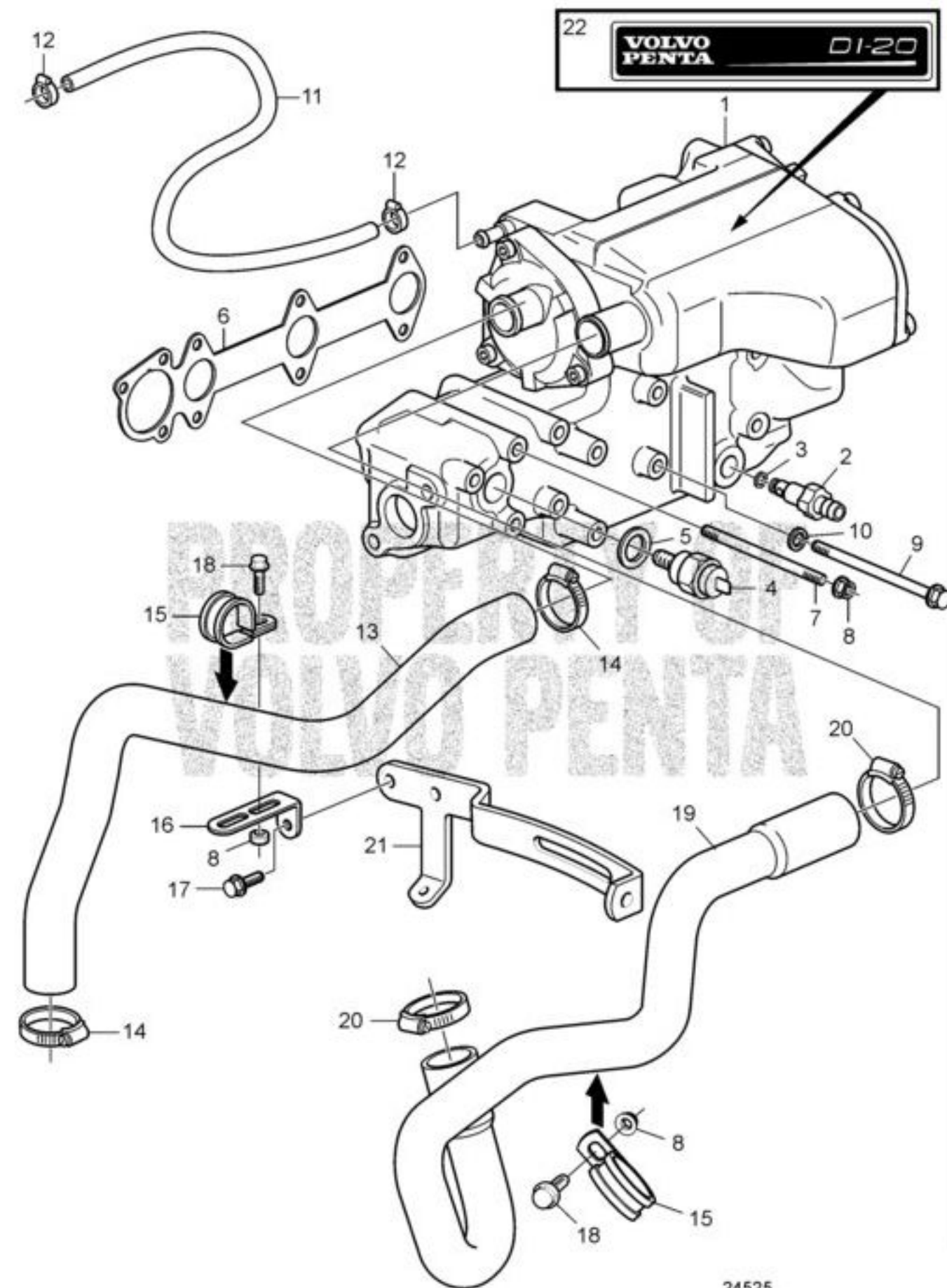
D1-20A, D1-20B, D1-20F



22994

#	Description	PartNo.	Qty	Price/each (DKK)
1	Heat Exchanger	3840128	1	9 858,75
2	• Housing		1	Out of production
	Obsolete part			
3	• End plate	3842022	1	418,75
4	• End plate	3842021	1	472,50
5	• Insert	3842018	1	3 803,75
6	• Hex. socket screw	959207	6	4,13
7	• O-ring	3842016	4	114,50
8	• Stud	3584203	4	66,13
9	• Thermostat	3842015	1	596,25
10	• O-ring	3583830	1	99,63
11	• Thermostat	888622	1	771,25
12	• Hex. socket screw	959222	2	4,38
13	• O-ring	3586514	1	79,25
14	• Draining nipple	3583822	1	66,13
15	• • O-ring		1	Out of production
16	• Pipe	3842014	1	261,25
17	• Plug	982364	1	231,25

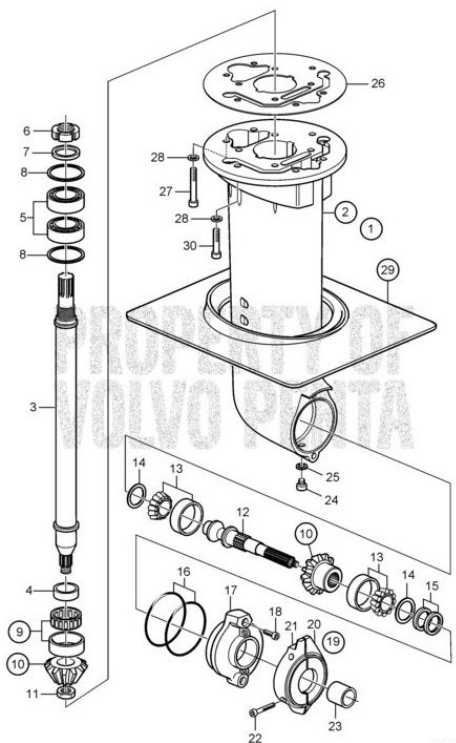
# Volvo Penta Exploded view / schematic Heat Exchanger D1-20A, D1-20B



#	Description	PartNo.	Qty	Price/each (DKK)
1	Heat Exchanger	3840128	1	9 858,75
2	Draining nipple			
3	O-ring		1	Out of production
4	Temperature sensor		1	Out of production
	See Electrical system/EVC Electrical system D1-D2			
5	Gasket	11998	1	9,63
6	Gasket	3812151	1	201,25
7	Stud	3884546	2	46,50
8	Flange nut	945407	4	1,16
9	Hexagon screw	955285	7	3,88
10	Spring washer	861913	7	2,63
11	Hose	993304	1	101,38
	Heat exchanger-expansion tank.			
12	Hose clamp	945652	2	Out of production
	Replaced by:			
	Klamma	976576	2	13,50
13	Hose			
	Heat exchanger-sea water pump.			
14	Hose clamp			
15	Clamp	952636	2	6,38
16	Bracket	965558	1	26,75
17	Flange screw	947107	1	2,63
18	Flange screw	946544	2	2,00
19	Hose	3818594	1	831,25
	Heat exchanger-water pump.			
20	Hose clamp	853548	2	55,00
21	Tensioner			
22	Label	3809965	1	55,88



**Volvo Penta Exploded view / schematic Lower Gear Unit Sail Boat Drive Unit 130S, 130SR**  
**130S-A, 130S-B, 130SR-A, 130SR-B**

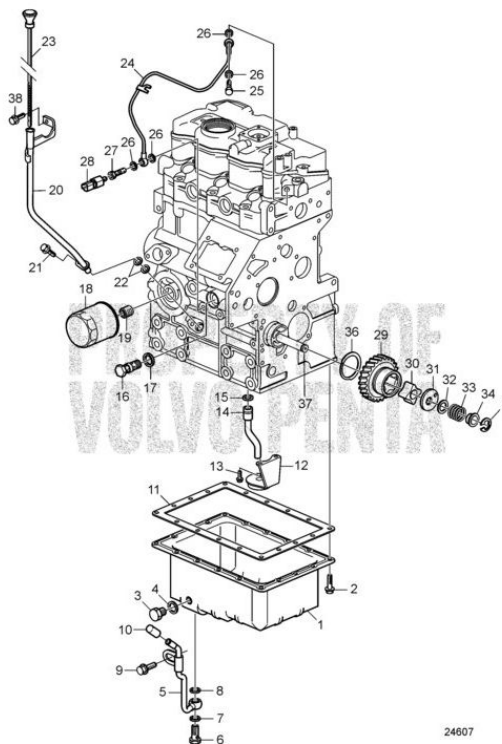


20869

#	Description	PartNo.	Qty	Price/each (DKK)
1	Gear housing	3589556	1	25 622,50
2	· Gear housing	3584492	1	Out of production
	Replaced by 3819860.			
	Replaced by:			
	· Våxehus	3819860	1	9 105,00
2	· Gear housing	3819860	1	9 105,00
3	· · Shaft	3808719	1	1 061,25
4	· Inner ring	889736	1	266,25
5	· Roller bearing	11041	2	260,00
6	· Lock nut	3586672	1	106,13
7	· Spacer ring	889738	1	107,88
8	· Shim	3586729	0	126,25
	TH=0,10mm			
8	· Shim	3582874	0	176,25
	TH=0,15mm			
8	· Shim	3582875	0	77,25
	TH=0,20mm			
8	· Shim	3586730	0	131,25
	TH=0,50mm			
8	· Shim	3586731	0	131,25
	TH=1,00mm			
9	· NEEDLE BEARING	3586323	1	593,75
10	· Gear set	3583363	1	5 952,50
	Ratio 2.19:1			
11	· Nut	3582885	1	100,50
12	· Propeller shaft	3582888	1	4 938,75
13	· Roller bearing	3854249	2	366,25
	(3582473)			
14	· Adjusting washer	851980	0	41,88
	TH=0,10mm, (3582477)			
14	· Adjusting washer	851981	0	55,88
	TH=0,15mm, (3582478)			
14	· Shim	3582876	0	130,00
	TH=0,20mm			
14	· Adjusting washer	851982	0	37,50
	TH=0,30mm, (3582479)			
14	· Shim	3583347	0	130,00
	TH=0,50mm			
14	· Shim	3582480	0	
	TH=1,00mm			
15	· Sealing ring	3593663	2	237,50
16	· O-ring	889672	2	11,25
17	· Bearing housing	3584278	1	1 832,50
18	· Hex. socket screw	946541	2	23,25
	L=25MM			
19	· Anode kit, zinc	3888305	1	502,00
19	· Anode kit, magnesium	3888306	1	648,00
20	· · Anode		1	Out of production
21	· · Anode		1	Out of production
	LEFT			
22	· · Hex. socket screw	963688	2	36,38
	L=40mm			
23	· Spacer	3582887	1	278,75
24	· Plug	3854539	1	145,00
25	· · O-ring	3855081	1	7,13
26	Gasket	3586693	1	75,38
27	Hex. socket screw	963703	8	17,75
28	Washer	941670	10	4,13
29	Mounting kit	854932	1	658,00
	(3583365)			
30	Hex. socket screw	963700	2	29,38

# Volvo Penta Exploded view / schematic Lubricating System

## D1-20A, D1-20B, D1-20F



24607

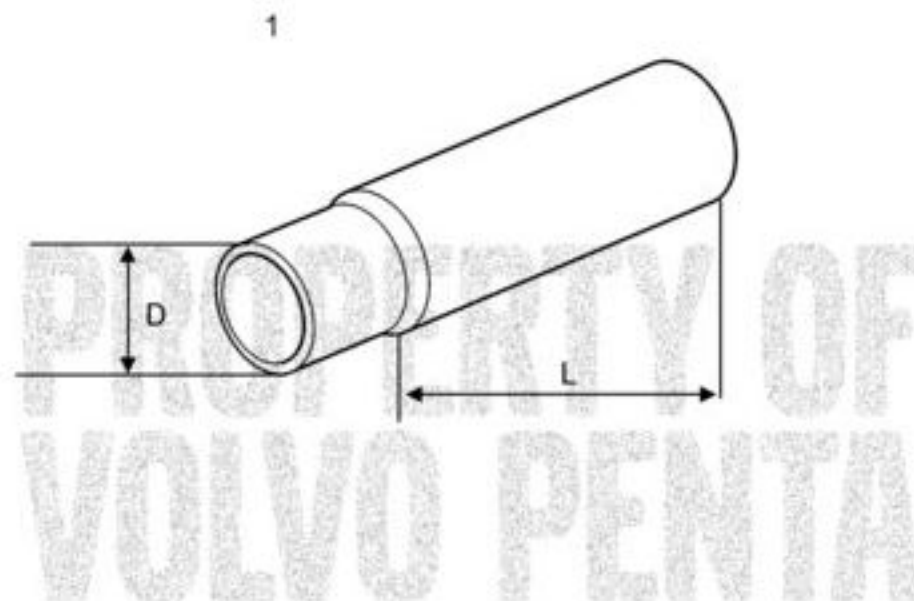
#	Description	PartNo.	Qty	Price/each (DKK)
1	Sump	3581742	1	Out of production
	D1-20A, D1-20B			
	Replaced by:			
	Sump	21265546	1	1 172,50
1	Sump	21265546	1	1 172,50
	D1-20F			
2	Hexagon screw	21246391	18	14,00
3	Plug	3808606	2	24,25
4	Washer	3808607	2	24,25
5	Oil pipe	3581779	1	792,50
6	Hollow screw	3581928	1	137,50
7	Sealing ring	3884542	1	24,25
8	Sealing ring	3884543	1	37,25
9	Flange screw	946471	1	4,00
10	Rubber cap	1276516	1	28,88
11	Gasket	3580227	1	352,50
12	Strainer	3886402	1	472,50
13	Screw	861526	2	25,13
14	Suction pipe	861998	1	110,75
15	O-ring	861997	1	24,25
16	Reduction valve	3583580	1	423,75
17	O-ring	3583581	1	24,25
18	Oil filter	861473	1	202,00
19	Bolt	861825	1	37,25
20	Dipstick tube	3885001	1	643,75
21	Hexagon screw	21246391	1	14,00
22	O-ring	3886404	2	37,25
23	Dipstick	40005668	1	237,50
24	Oil pipe	3809703	1	1 070,00
25	Hollow screw	861872	1	24,25
26	Gasket	947620	4	2,38
27	Hollow screw	3583575	1	338,75
28	Pressure monitor	3808796	1	Out of production
	Replaced by:			
	Tryckkontakt	21250645	1	683,75
28	Pressure switch	21250645	1	683,75
29	Gear			
	D1-20A, D1-20B			
29	Gear			
	D1-20F			
30	Rotor		1	Out of production
	Obsolete part, Replaced by 21541017			
30	Oil pump	21541017	1	2 343,75
31	Cap	861527	1	207,50
32	Shim	861528	1	14,00
	T=0.10mm			
32	Shim	861529	1	14,00
	T=0.15mm			
32	Shim	861530	1	14,00
	T=0.20mm			
32	Shim	861531	1	14,00
	T=0.50mm			
33	Spring	861532	1	14,00
34	Sleeve	861533	1	37,25
35	Lock ring	861534	1	14,88
36	Thrust washer	861986	1	28,88
37	Shaft			
	D1-20A, D1-20B			
37	Shaft			
	D1-20F			
38	Flange screw	946440	1	3,00



# Volvo Penta Exploded view / schematic Propeller Shaft Sleeve

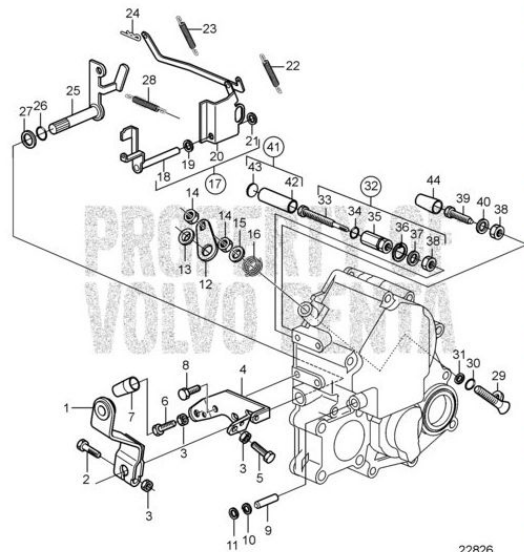
D1-13A, D1-13B, D1-20A, D1-20B, D1-30A, D1-30B, D2-40A, D2-40B, D1-13F, D1-20F, D1-30F, D2-40F

#	Description	PartNo.	Qty	Price/each (DKK)
1	Socket pipe D=30mm, L=750mm	827893	1	1 192,00
1	Socket pipe D=30mm, L=1000mm	1140028	1	1 732,00
1	Socket pipe D=30mm, L=1500mm	1140029	1	2 077,00
1	Socket pipe D=35mm, L=750mm	1140030	1	1 546,00
1	Socket pipe D=35mm, L=1000mm	1140031	1	1 835,00
1	Socket pipe D=35mm, L=1500mm	1140032	1	2 449,00



# Volvo Penta Exploded view / schematic Regulation System

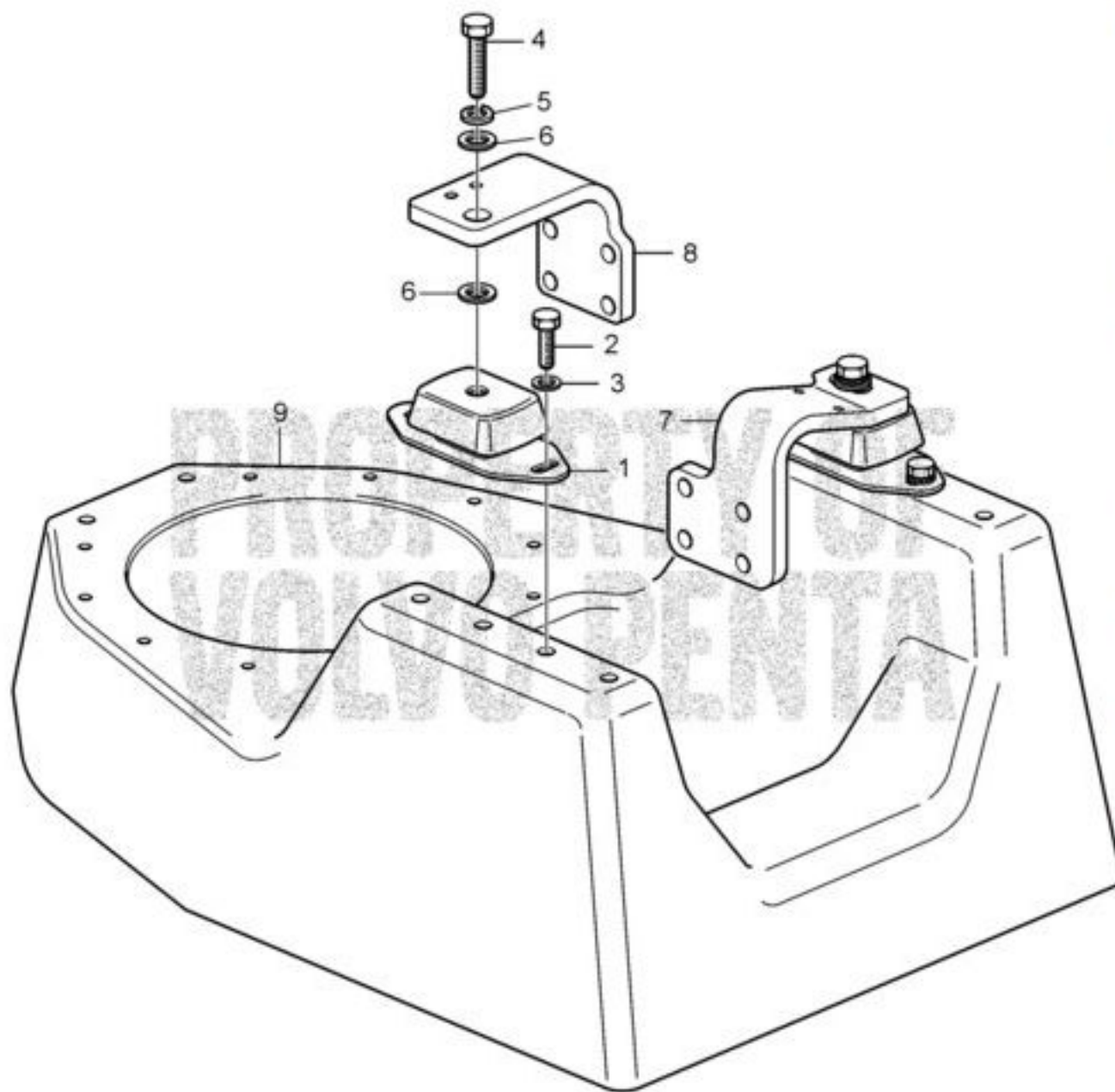
D1-20A, D1-20B



#	Description	PartNo.	Qty	Price/each (DKK)
1	Intermediate lever	3580036	1	163,75
2	• Hexagon screw	955275	1	1,88
3	Flange nut	945407	3	1,16
4	Stay	3580042	1	138,75
5	Screw	3887085	1	39,13
6	Hexagon screw	955274	1	1,50
7	Cap	3583761	1	49,38
8	Screw	3580581	1	24,25
9	Shaft	3809019	1	24,25
10	O-ring	3886396	1	19,63
11	Lock ring	3580041	1	4,75
12	Intermediate lever	3580051	1	54,00
13	Bushing	843109	1	45,63
14	Hexagon nut	955782	2	0,75
15	Washer	191172	1	0,93
16	Spring	3580048	1	12,13
17	Intermediate lever	3580261	1	426,25
18	• Lever		1	Out of production
19	• Washer	3580031	1	14,00
20	• Lever		1	Out of production
21	• Lock ring	3580030	1	46,50
22	Spring	3580058	1	24,25
23	Spring	3580057	1	37,25
24	Locking pin	3580032	1	14,00
25	Arm	3580034	1	84,63
26	O-ring	3886395	1	19,63
27	• Lock ring	3580030	1	46,50
28	• Spring	3887084	1	141,25
29	• Arm	3580045	1	96,75
30	Lock ring	3580046	1	41,88
31	O-ring	3886397	1	19,63
32	Screw		1	Out of production
33	• Screw	3886399	1	132,50
34	• O-ring	3583772	1	24,25
35	• Nut		1	Out of production
36	• Lock ring		1	Out of production
37	• Sealing ring	3580087	1	14,00
38	Screw	3583778	1	49,38
39	Sealing ring	3580087	1	14,00
40	Nut	3583779	1	99,63
41	Sleeve	3584083	1	383,75
42	• Sleeve		1	Out of production
43	• Cap		1	Out of production
44	Cap	3884537	1	477,50



# Volvo Penta Exploded view / schematic Engine Suspension, Sail Boat Drive Unit D1-20A, D1-20B, D1-20F



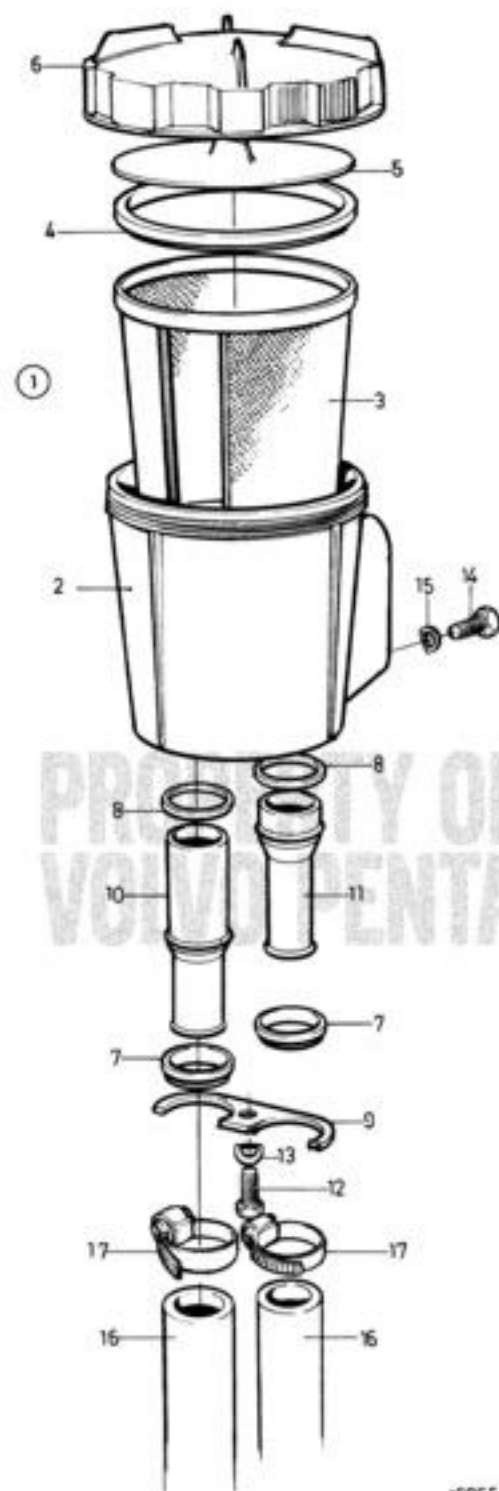
#	Description	PartNo.	Qty	Price/each (DKK)
1	Rubber cushion	861460	2	1 348,75
2	Hexagon screw	963580	4	37,25
3	Washer	976945	4	1,03
4	Hexagon screw	959710	2	34,00
5	Spring washer	941912	2	2,25
6	Washer	955900	4	Out of production
	Replaced by:			
	Bricka	994873	4	3,50
7	Engine bracket, front Port	3812710	1	876,25
8	Engine bracket, front Starboard, D1-20A, D1-20B	3819404	1	622,50
8	Engine bracket Starboard, D1-20F	21107579	1	2 176,25
9	Engine bed	3842284	1	6 472,50

22899



# Volvo Penta Exploded view / schematic Sea Water Filter

D1-13A, D1-13B, D1-20A, D1-20B, D1-30A, D1-30B, D2-40A, D2-40B, D1-13F, D1-20F, D1-30F, D2-40F



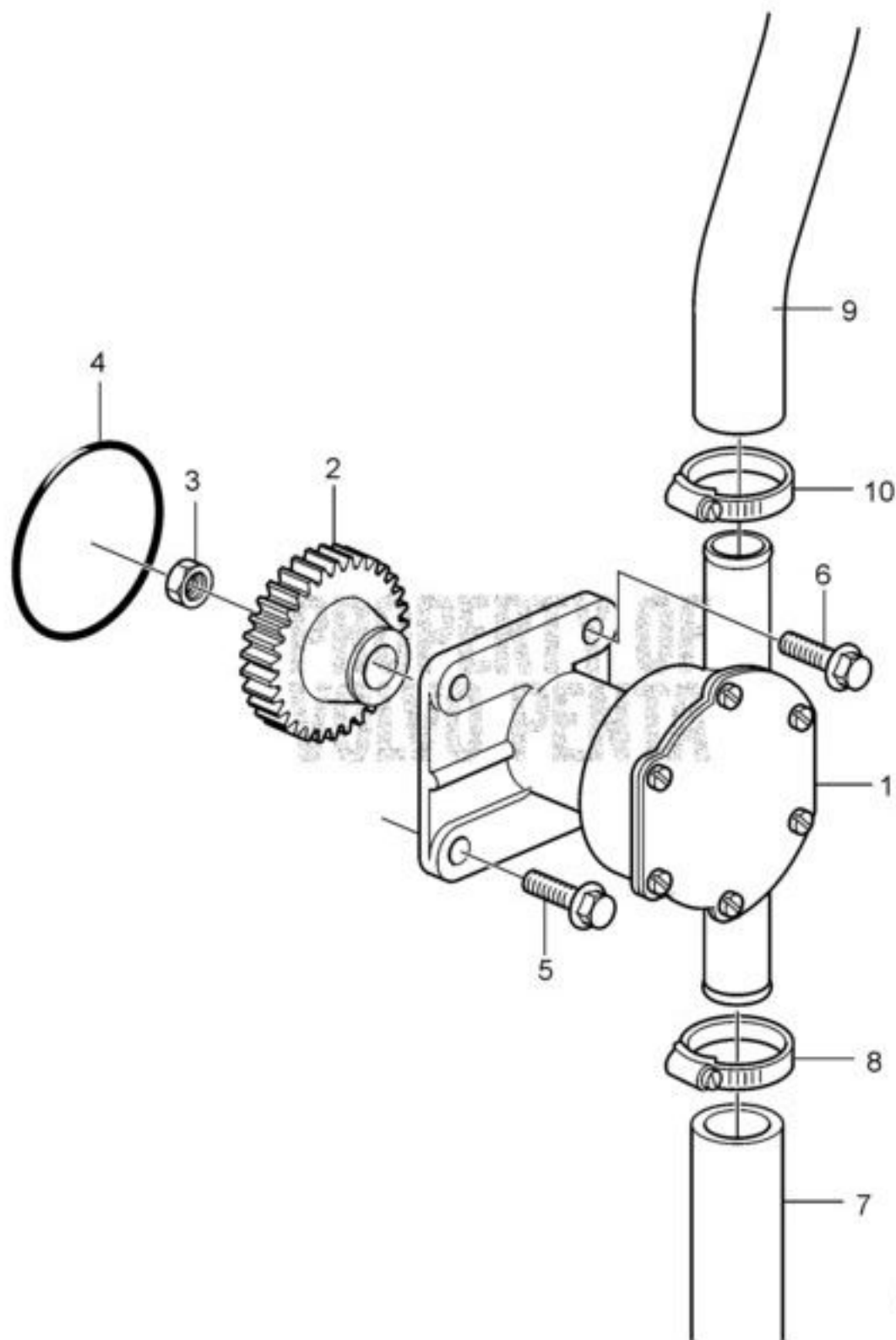
15055

#	Description	PartNo.	Qty	Price/each (DKK)
1	Sea Water Filter	21219693	1	Out of production
Replaced by:				
	Röradapter	21951975	2	105,38
	Sjövattenfilter	3583840	1	1 015,00
2	• Strainer	842924	1	652,50
3	• • Strainer	842723	1	381,25
4	• • Sealing	842724	1	203,75
5	• • Pressure plate	842982	1	63,88
6	• • Cover	842722	1	372,50
7	• Pipe retainer	847108	2	59,38
8	• Sealing ring	858986	2	25,25
9	• Retainer	21211745	1	215,00
10	• Connecting pipe INLET	3888859	1	408,75
11	• Connecting pipe Outlet	3888862	1	368,75
12	• Hexagon screw	955270	1	Out of production
Replaced by:				
	Skruv	955271	1	1,50
13	• Spring washer	941906	1	0,60
14	• Flange screw (955296)	965215	4	3,38
15	• Spring washer	941907	4	0,78
16	Hose	952970	0	150,00
17	Hose clamp	961666	0	24,00



# Volvo Penta Exploded view / schematic Sea water pump

D1-13A, D1-13B, D1-20A, D1-20B, D1-13F, D1-20F

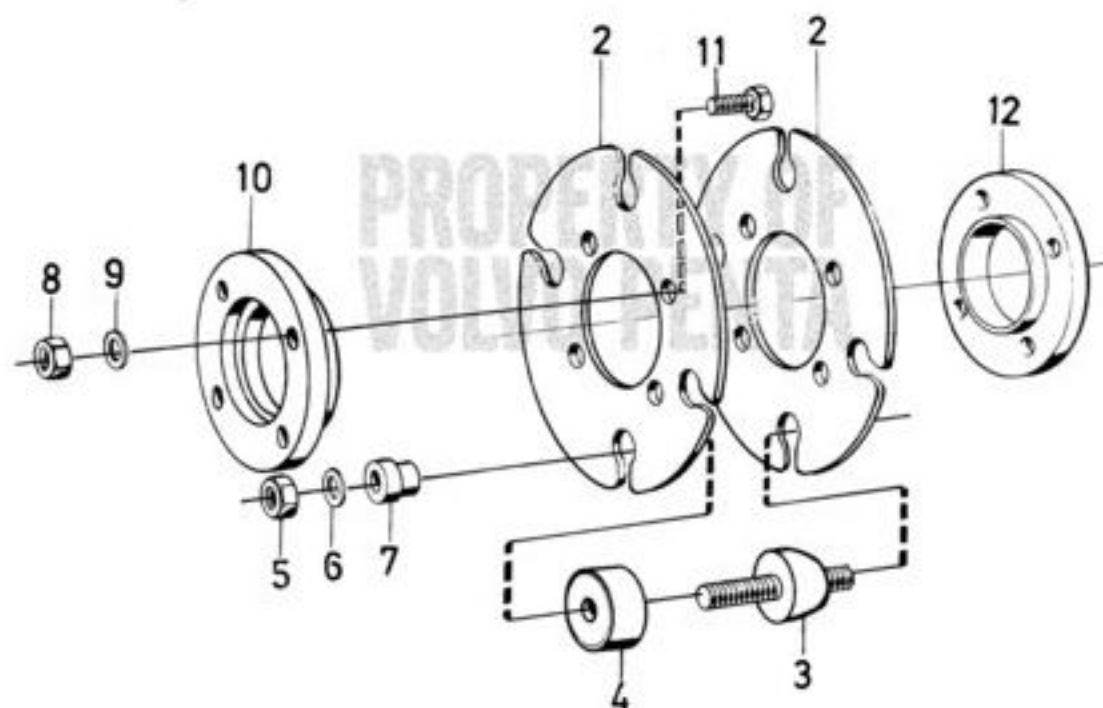


#	Description	PartNo.	Qty	Price/each (DKK)
1	Sea water pump bulletin 43-19A	3593654	1	4 548,75
2	Gear	3580062	1	948,75
3	Flange nut	21246409	1	14,00
4	O-ring	3580063	1	14,00
5	Flange screw	965180	2	5,50
6	Flange screw	965216	2	5,13
7	Hose Sea water pump-sea water filter.			
8	Hose clamp			
9	Hose Sea water pump-heat exchanger., D1-13	3809920	1	723,75
9	Hose Sea water pump-heat exchanger., D1-20	3812156	1	431,25
10	Hose clamp Replaced by: Slangklamma	943475 994560	2 2	Out of production 10,38

# Volvo Penta Exploded view / schematic Shaft Coupling, Flexible

D1-13A, D1-13B, D1-20A, D1-20B, D1-30A, D1-30B, D2-40A, D2-40B, D1-13F, D1-20F, D1-30F, D2-40F

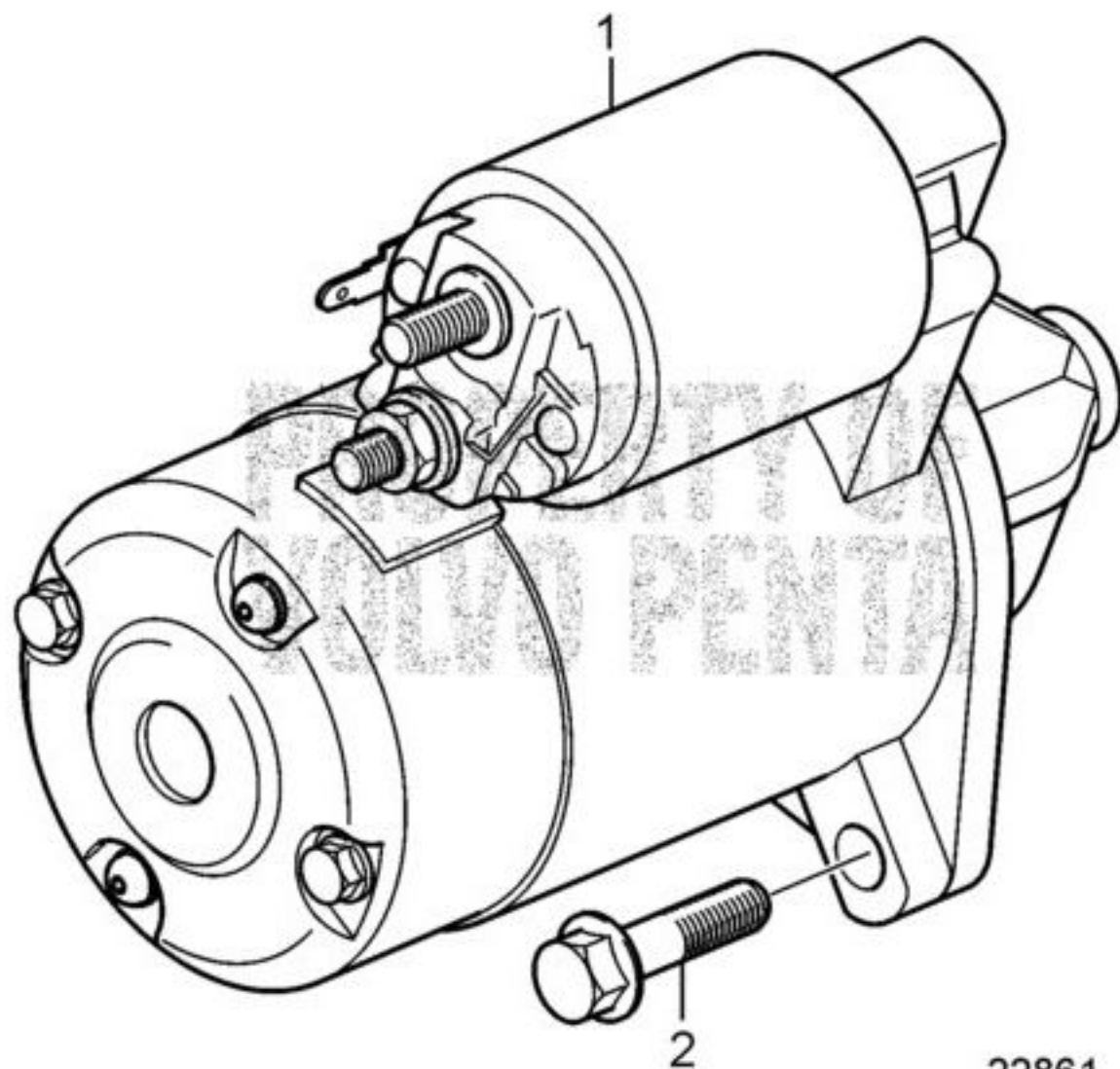
①



#	Description	PartNo.	Qty	Price/each (DKK)
1	Clutch	833626	1	2 263,00
2	• Flexplate	803125	2	798,75
3	• Rubber cushion	803762	4	367,50
4	• Protecting casing	803748	4	99,63
5	• Hexagon nut	955850	8	5,38
6	• Spring washer	940280	8	1,16
7	• Washer	802976	8	44,75
8	• Hexagon nut (955783)	971071	4	1,75
9	• Spring washer	941908	4	0,90
10	• Guide ring	827935	1	1 126,25
11	• Hexagon screw L=25MM	970947	4	3,63
11	• Hexagon screw L=35mm (955319) Replaced by: Flänsskruv	970949	4	Out of production 5,63
12	• Guide ring	803029	1	1 386,25



# Volvo Penta Exploded view / schematic Starter motor D1-13A, D1-13B, D1-20A, D1-20B, D1-13F, D1-20F



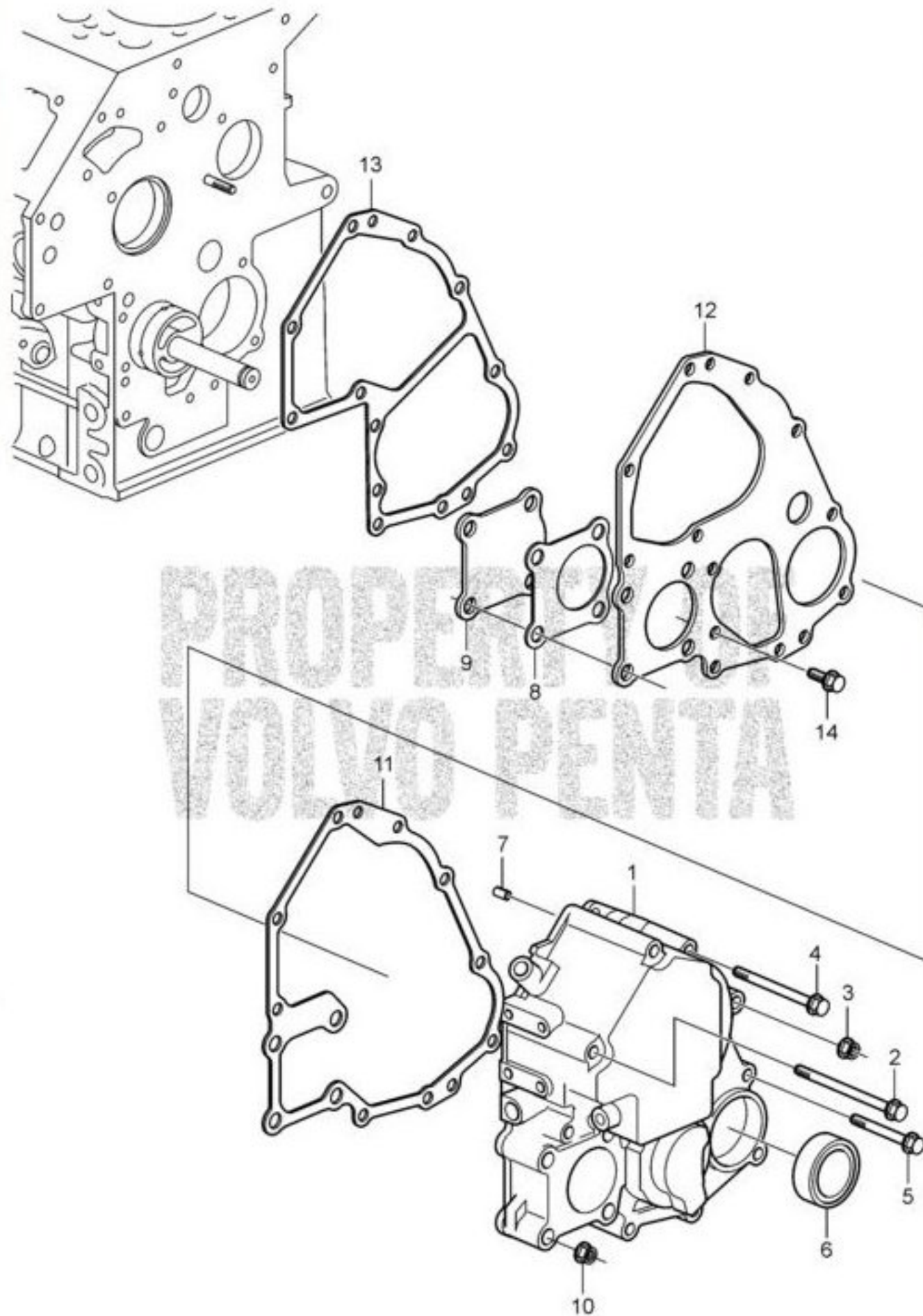
22861

#	Description	PartNo.	Qty	Price/each (DKK)
1	Starter motor, exch	3803904	1	Out of production
	Replaced by:			
	Startmotor	3840888	1	4 752,50
2	Flange screw	946471	2	4,00



# Volvo Penta Exploded view / schematic Timing Gear Housing

D1-13A, D1-13B, D1-20A, D1-20B

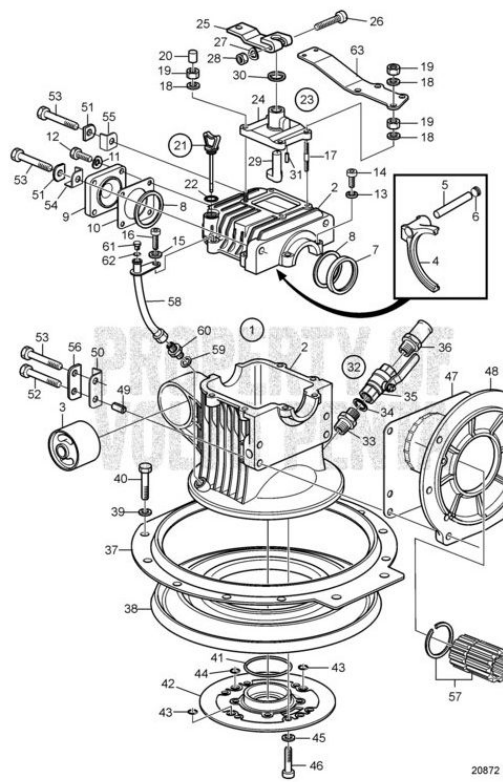


#	Description	PartNo.	Qty	Price/each (DKK)
1	Timing gear casing	3840894	1	3 218,75
2	Screw	861899	2	24,25
3	Flange nut	945407	1	1,16
4	Flange screw	965178	2	3,63
5	Screw	3580053	4	14,00
6	Sealing ring	3580026	1	84,63
7	Clamping pin		1	Out of production
8	Cap	3886424	1	24,25
9	Gasket	3580060	1	37,25
10	Flange lock nut	948645	4	6,13
11	Gasket	3580025	1	198,75
12	Plate	3886393	1	266,25
13	Gasket	861536	1	161,25
14	Screw	861526	3	25,13



# Olvo Penta Exploded view / schematic Upper Gear Unit, Sail Boat Drive Unit 130S, 130SR

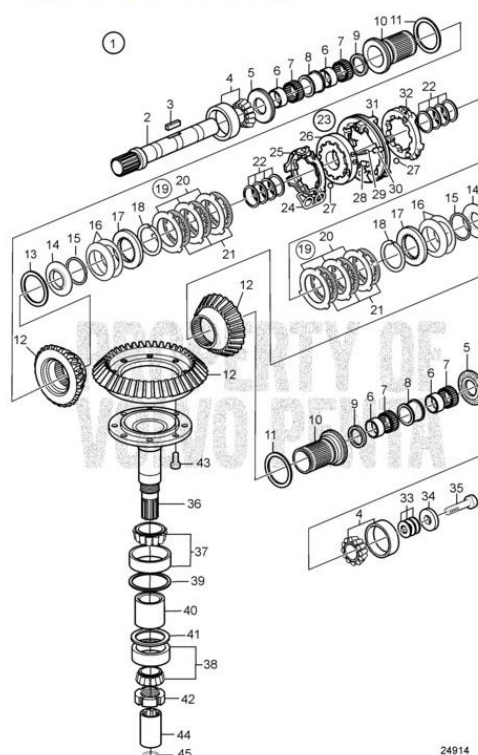
130S-A, 130S-B, 130SR-A, 130SR-B



#	Description	PartNo.	Qty	Price/each (DKK)
1	Upper gear	3589555	1	Out of production
	Ratio 2.19:1			
	Replaced by:			
1	• Övre växel components not spec.	3593846	1	46 128,75
2	• Gear housing		1	Out of production
3	• Rubber bushing	3586700	1	1 210,00
4	• Selector fork	3582551	1	4 920,00
	Replaced by service kit 40005267			
4	• Gear changing unit, shift mechanism	40005267	1	7 887,50
	Includes shift mechanism 3849903, shaft 3849909 and fork 3593595.			
5	• Fork shaft	3582463	1	Out of production
	Replaced by service kit 40005267			
6	• Plug	3581973	1	41,00
7	• Sealing	3583322	1	321,25
8	• Shim	948298	0	30,75
	TJ=0,10mm (3582566)			
8	• Shim	948299	0	27,13
	TJ=0,15mm (3582567)			
8	• Shim	3582568	0	94,88
	TH=0,20mm			
8	• Shim	948300	0	32,63
	TH=0,30mm, (3582569)			
8	• Shim	3586724	0	103,38
	TH=0,50mm			
8	• Shim	3586728	0	107,88
	TH=1,00mm			
9	• Cover	3582922	1	231,25
10	• Gasket	3582557	1	44,75
11	• Spring washer	941907	4	0,78
12	• Hexagon screw	955294	4	3,75
13	• Spring washer	941907	6	0,78
14	• Hex. socket screw	941761	6	8,88
15	• Spring washer	941907	2	0,78
16	• Hex. socket screw	959229	2	5,75
17	• Stud	3586720	4	41,00
18	• Spring washer	941907	6	0,78
19	• Hexagon nut	955782	6	0,75
20	• Protecting cap		2	Out of production
21	• Oil dipstick	3807633	1	38,13
22	• O-ring	3582203	1	40,00
23	• Shift mechanism	3849903	1	3 683,75
24	• Cover	3582550	1	Out of production
	Replaced by:			
	Växlingsmekanism	3808774	1	3 813,75
25	• Engagement lever kit	3849913	1	572,50
26	• Screw		1	Out of production
	Included in kit.			
27	• Spring washer		2	Out of production
	Included in kit.			
28	• Nut		1	Out of production
	Included in kit.			
29	• CAM		1	Out of production
	Included in kit.			
30	• Sealing	3581966	1	356,25
31	• Pin		1	Out of production
	Included in kit.			
32	• Drain cock		1	Out of production
33	• Nipple	3583431	1	222,50
34	• Gasket	947626	1	8,75
35	• Ball valve	1140097	1	546,25
36	• Nipple	3583432	1	228,75
37	• Clamping ring	3586701	1	2 475,00
38	• Sealing ring	3582890	1	Out of production
	Included in kit 877362.			
39	• Washer	941670	10	4,13
40	• Hex. socket screw	946541	10	23,25
41	• O-ring	925256	1	39,00
42	• Intermediate plate	3584064	1	2 995,00
43	• O-ring	944364	2	15,00
44	• O-ring	976994	1	2,50
45	• Washer	941670	3	4,13
46	• Hex. socket screw	946541	3	23,25
47	• Insulating plate	3583356	1	48,38
48	• Flange	3583355	1	3 386,25
49	• Insulating bushing	3583361	1	175,00
50	• Insulating washer	3583359	2	7,75
51	• Insulating washer	3583357	2	6,50
52	• Hexagon screw	970954	2	5,50
	L=60mm (970954)			
53	• Flange screw	965185	4	6,25
	L=40mm			
54	• Insulating washer	3583358	1	6,25
55	• Insulating washer	3583357	1	6,50
56	• Plate	3583359	2	257,50
57	• Splined sleeve (3583492)	3843112	1	2 995,00
58	• Oil draining pipe	3586321	1	371,25
59	• Sealing	3807630	1	21,50
60	• Nipple	3807629	1	46,50
61	• Plug	3807631	1	85,63
62	• O-ring	3812956	1	Out of production
	Replaced by:			
	Plugg	3807631	1	85,63
63	• Bracket	3586718	1	1 005,00

20872

**Volvo Penta Exploded view / schematic Upper Gear Unit, Sail Boat Drive Unit 130S, 130SR, Components**  
**130S-A, 130S-B, 130SR-A, 130SR-B**



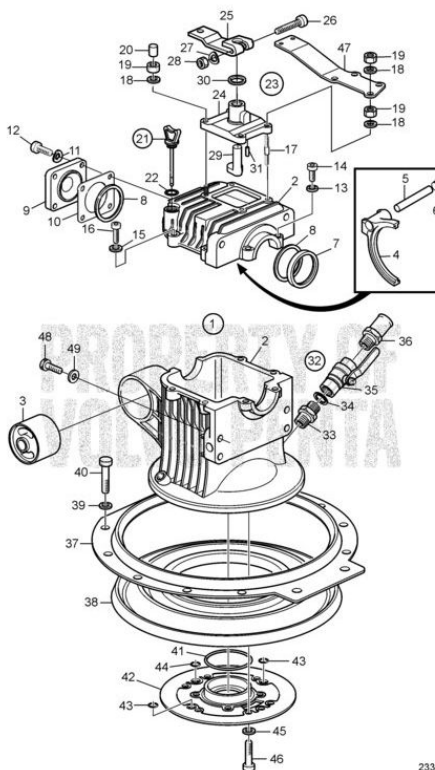
24914

#	Description	PartNo.	Qty	Price/each (DKK)
1	INPUT SHAFT		1	Out of production
2	INPUT SHAFT	3841088	1	2 865,00
3	Key	3582591	2	34,50
4	Roller bearing	183834	2	822,50
5	Thrust washer	3582571	2	1 321,25
6	Inner race	3582904	4	812,50
7	NEEDLE BEARING	3582905	4	507,50
8	Spacer ring	3582906	2	107,88
9	Spacer	3582914	2	88,38
10	Bushing	3582907	2	1 497,50
11	Shim	3582908	0	39,13
11	Shim	3586721	0	18,63
11	Shim	3582911	0	24,25
11	Shim	3582910	0	39,13
11	Shim	3586723	0	11,25
12	Gear set	3586547	1	8 752,50
13	Shim	948298	0	30,75
13	Shim	948299	0	27,13
13	Shim	3582568	0	94,88
13	Shim	948300	0	32,63
13	Shim	3586724	0	103,38
13	Shim	3586728	0	107,88
14	Spacer	3582914	2	88,38
15	Ring	3582913	2	24,25
16	Disc spring	3808598	2	295,00
17	End disc	3849908	2	298,75
18	Lock ring	3582917	2	24,25
19	Disc kit	3848817	1	5 366,25
20	Disc, outer	3582579	6	166,25
21	Disc, inner	3582578	6	287,50
22	Shim	3582872	0	123,75
22	Shim	3583430	0	183,75
22	Shim	3583429	0	183,75
22	Shim	3582580	0	94,88
22	Shim	3582581	0	94,88
22	Shim	3582582	0	94,88
22	Shim	3582583	0	94,88
23	Gear selector contro (3817185)	3593848	1	8 193,75
24	Torsion spring	3582024	3	151,25
25	Retainer			Out of production
26	Ring	3582898	1	2 353,75
27	Ball	3582585	6	46,50
28	Spindle	3582590	3	7,75
29	Spring	3582588	3	39,13
30	Stop pin	3582589	3	226,25
31	Sleeve			Out of production
32	Retainer			Out of production
33	Shim	3586725	0	64,25
33	Shim	3586726	0	64,25
33	Shim	3582900	0	36,38
33	Shim	3582901	0	36,38
33	Shim	3586727	0	6,50
34	Washer	3582899	1	170,00
35	Screw	3808717	1	84,75
36	Gear	3582879	1	905,00
37	Roller bearing	11041	1	260,00
38	Roller bearing	183834	1	822,50
39	Shim	3586729	0	126,25
39	Shim	3582874	0	176,25
39	Shim	3582875	0	77,25
39	Shim	3586730	0	131,25
39	Shim	3586731	0	131,25
40	Spacer	3582880	1	255,00
41	Shim	3808718	0	18,63
41	Shim	3582872	0	123,75
41	Shim	3583430	0	183,75
41	Shim	3583429	0	183,75
41	Shim	3582580	0	94,88
41	Shim	3582581	0	94,88
41	Shim	3582582	0	94,88
41	Shim	3582583	0	94,88
42	Lock nut	3582925	1	97,75
43	Hexagon screw	955271	8	1,50
44	Splined sleeve	3582894	1	291,25
45	Lock ring	3583350	1	6,75



# Volvo Penta Exploded view / schematic Upper Gear Unit, Sail Boat Drive Unit 130S, 130SR

130S-A, 130S-B, 130SR-A, 130SR-B

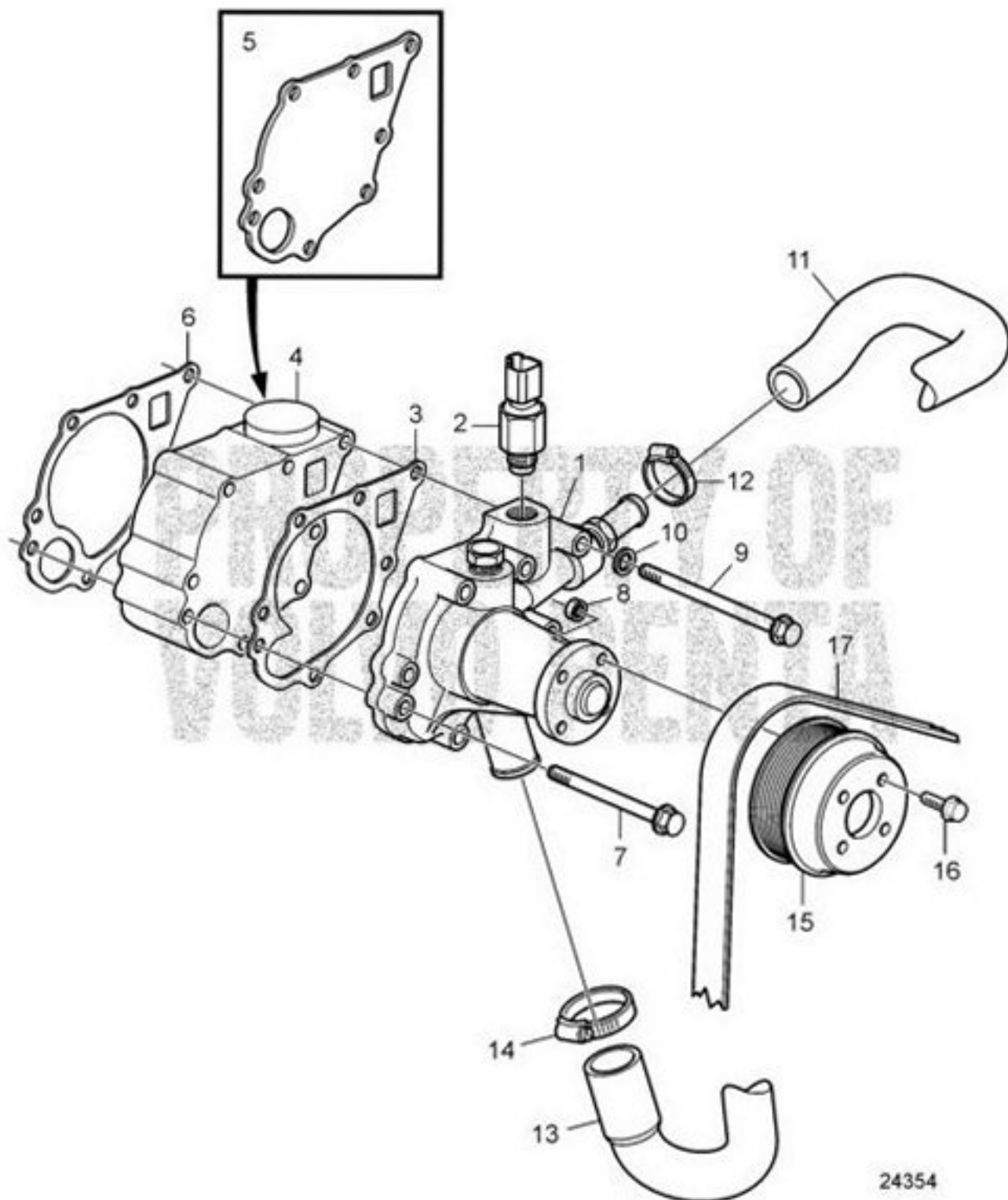


23359

#	Description	PartNo.	Qty	Price/each (DKK)
1	Upper gear Ratio 2,47:1	3589664	1	46 128,75
2	· Housing	3808483	1	11 486,25
3	· Rubber bushing	3586700	1	1 210,00
4	· Selector fork	3582551	1	4 920,00
	Replaced by service kit 40005267			
4	· Gear changing unit, shift mechanism	40005267	1	7 887,50
	Includes shift mechanism 3849903, shaft 3849909 and fork 3593595.			
5	· Fork shaft	3582463	1	Out of production
	Replaced by service kit 40005267			
6	· Plug	3581973	1	41,00
7	· Sealing	3583322	1	321,25
8	· Shim	948298	0	30,75
	TJ=0,10mm (3582566)			
8	· Shim	948299	0	27,13
	TJ=0,15mm (3582567)			
8	· Shim	3582568	0	94,88
	TH=0,20mm			
8	· Shim	948300	0	32,63
	TH=0,30mm, (3582569)			
8	· Shim	3586724	0	103,38
	TH=0,50mm			
8	· Shim	3586728	0	107,88
	TH=1,00mm			
9	· Cover	3582922	1	231,25
10	· Gasket	3582557	1	44,75
11	· Spring washer	941907	4	0,78
12	· Hexagon screw	955294	4	3,75
13	· Spring washer	941907	6	0,78
14	· Hex. socket screw	941761	6	8,88
15	· Spring washer	941907	2	0,78
16	· Hex. socket screw	959229	2	5,75
17	· Stud	3586720	4	41,00
18	· Spring washer	941907	6	0,78
19	· Hexagon nut	955782	6	0,75
20	· Protecting cap		2	Out of production
21	· Oil dipstick	3807633	1	38,13
22	· O-ring	3582203	1	40,00
23	· Shift mechanism	3849903	1	3 683,75
24	· Cover	3582550	1	Out of production
	Replaced by:			
	Växlingsmekanism	3808774	1	3 813,75
25	· Engagement lever kit	3849913	1	572,50
26	· Screw		1	Out of production
	Included in kit.			
27	· Spring washer		2	Out of production
	Included in kit.			
28	· Nut		1	Out of production
	Included in kit.			
29	· CAM		1	Out of production
30	· Sealing	3581966	1	356,25
31	· Pin		1	Out of production
	Included in kit.			
32	· Drain cock		1	Out of production
33	· Nipple	3583431	1	222,50
34	· Gasket	947626	1	8,75
35	· Ball valve	1140097	1	546,25
36	· Nipple	3583432	1	228,75
37	· Clamping ring	3586701	1	2 475,00
38	· Rubber bellows	21389074	1	2 310,00
39	· Washer	941670	10	4,13
40	· Hex. socket screw	946541	10	23,25
41	· O-ring	925256	1	39,00
42	· Intermediate plate	3584064	1	2 995,00
43	· O-ring	944364	2	15,00
44	· O-ring	976994	1	2,50
45	· Washer	941670	3	4,13
46	· Hex. socket screw	946541	3	23,25
47	· Bracket	3586718	1	1 005,00
48	· Flange screw	965185	6	6,25
49	· Washer	976945	6	1,03

# Volvo Penta Exploded view / schematic Water pump

## D1-13A, D1-20A



#	Description	PartNo.	Qty	Price/each (DKK)
1	Coolant pump	3803970	1	4 501,25
2	Thermo monitor	3808797	1	327,50
3	Gasket	3580003	1	96,75
4	Spacer D1-13	3886401	1	3 088,75
5	Plate D1-20	3887172	1	462,50
6	Gasket	3580001	1	96,75
7	Screw D1-13	861899	3	24,25
7	Screw D1-20	3580258	3	13,13
8	Flange nut	945407	1	1,16
9	Hexagon screw D1-13	20405647	4	13,75
9	Screw	3580243	4	14,00
10	Spring washer D1-13	861913	4	2,63
11	Hose			
	Water pump - expansion tank.			
12	Hose clamp			
13	Hose			
	Water pump - heat exchanger.			
14	Hose clamp			
15	Pulley	3812146	1	548,75
16	Screw	3580013	4	18,63
17	Drive belt			

24354

